

TubeChek™ C1D1 — Non Gamma Wellsite Tubing Inspection System



Tuboscope is pleased to announce the introduction of the TubeChek_{C1D1} inspection system. This unit is certified and meets Class-1 Div-1 safety standards with intrinsically safe electronics and includes an encapsulated coil housing.

Similar to our WellChek system, TubeChek_{C1D1} utilizes the same reporting and database soft-ware, providing you real-time tubing inspection, data management and evaluation of your used tubing.

This new system delivers an accurate evaluation of each tube using the same proven eddy current based split detection and Sonoscope EMI inspection for pitting and corrosion detection. Unique to this system, a flux integration method is used for cross-sectional area, calculated rod-wear and a flux leakage technique for magnetic field discrimination to determine rod strokes.

TubeChek_{C1D1} increases the size range capabilities of inspected tubing to include: 2 3/8", 2 7/8", 3 1/2", 4" and 4 1/2"

Benefits

- Professionally trained crew for efficient and safe operations
- Records exact defect and joint location in the well
- Real time usable information
- On-site inspection eliminates need for trucking to inspection facilities
- Immediate re-use of good tubing

Defect Detection

- Corrosion pitting
- Rod wear
- Wall loss
- Cracks
- Erosion
- Splits
- Cuts
- Holes
- 3-Dimensional Transverse Defects

MET Laboratories, Inc. Safety Certification - EMI - Telecom - Environmental Simulation - NEBS
914 WEST PATAPSCO AVENUE • BALTIMORE, MARYLAND 21230-3432 • PHONE (410) 949-1802 • FAX (410) 354-3313

July 28, 2017

Mr. Raymond Marcalos
National Oilwell Varco (NOV)
2835 Holmes Rd.
Houston, TX 77051
USA

Subject: Wellchek III Inspection Head System
Listing Number E114105; MET Project Number 42615
Safety Standards:

- UL CSA C22.2 No. 60079-0 Explosive atmospheres - Part 0: Equipment - General requirements
- UL CSA C22.2 No. 60079-11 Explosive Atmospheres - Part 11: Equipment Protection by Intrinsic Safety "i"
- UL CSA C22.2 No. 60079-18 Explosive atmospheres - Part 18: Equipment protection by encapsulation "m"

Dear Mr. Marcalos:

MET has determined the evaluated Wellchek III Inspection Head System to be compliant with the above referenced standards. Upon completion of a satisfactory Pre-Certification Factory Inspection,

UNITED STATES DEPARTMENT OF LABOR
Occupational Safety and Health Administration
English | Spanish

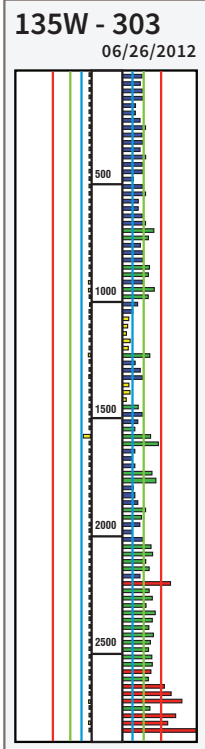
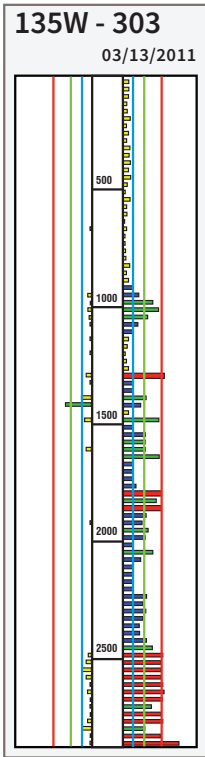
ABOUT OSHA - WORKERS - EMPLOYERS - REGULATIONS - ENFORCEMENT - TOPICS - NEWS & PUBLICATIONS - DATA - TRAINING -

Nationally Recognized Testing Laboratory Program
Employers and Regulators • Manufacturers • Testing and Certification Bodies •

Current List of NRTLs

<p>BACL Bay Area Compliance Laboratories 1274 Aculewood Avenue Sunnyvale, California 94099 United States More ></p>	<p>CSA CSA Group Testing and Certification Inc. 179 Rexdale Boulevard Etobicoke, Ontario M9W 1R3 Canada More ></p>	<p>CSUS Curtis-Strauss LLC (CSL) One Distribution Center Circle, Suite#1 Littleton, Massachusetts 01460 United States More ></p>	<p>FM FM Approvals LLC (FM) 1151 Boston-Providence Turnpike Norwood, Massachusetts 02062 United States More ></p>
---	--	--	---

TubeChek™_{C1D1} — Non Gamma Wellsite Tubing Inspection System

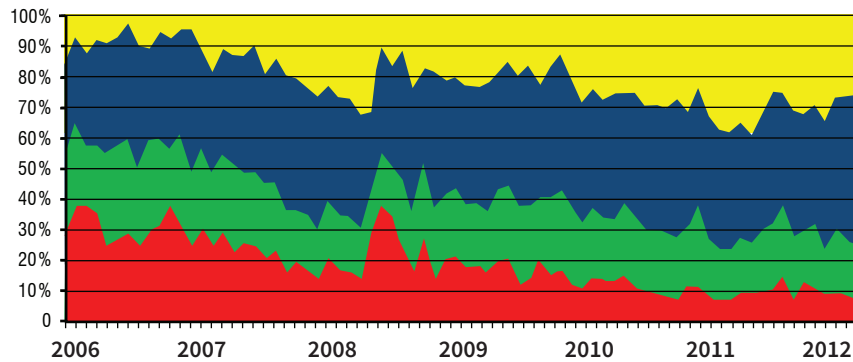
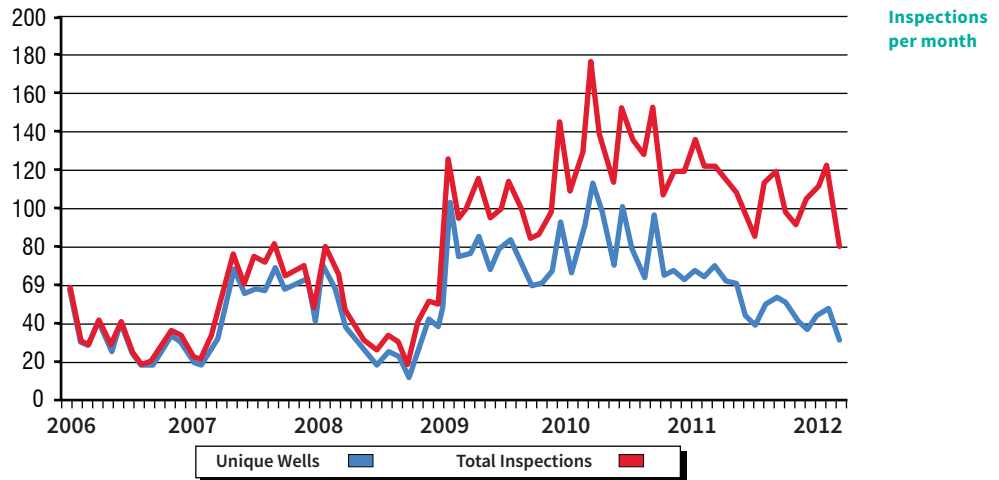


Sample Well

Well profiles show the rate of corrosion (left bars) and wall loss (right bars) by joint at precise depths.

WellTrak Tubing Data Management and Evaluation System provides production engineers, well managers, rig supervisors and others in tubing management programs access to TubeChek™_{C1D1} inspection reports. The reports provide critical data at precise depths where string wear, corrosion, or failures have occurred.

Tubing Management decisions based on WellTrak's online historical database of well/field conditions can greatly assist in string design, treatments or mitigation techniques before the well is put back on production. This valuable information helps extend the run life of wells, measure the effectiveness of changes, and reduce overall tubing failures.



Reject Rates per month
Continued application of on-site inspection at this field resulted in reduced reject rates and reduced tubing failures.

Benefits:

- Individual full inspection history
- Online access to well records
- Identify patterns or correlations among historical inspections
- Quick rod guide assessment can be established in conjunction with rod design programs
- Generalized statistics for inspections performed

The exclusive Tuboscope TubeChek™_{C1D1} inspection coupled with WellTrak's data management system maximizes the potential of your tubing string, preventing future problems while reducing operating costs.