

RigSense™ Rigsite Information System

The RigSense rigsite information system is the industry's most versatile integrated system, incorporating NOV's leading sensor technologies with the latest in computer and data acquisition systems. Our RigSense electronic drilling recorder (EDR) offers unparalleled ease of use coupled with a high degree of flexibility. Configured to display specific data needed for particular rig operations, the system operates as a single interface, allowing rig personnel to access historical information, make notes, and send messages to communicate with other displays at the rigsite. The RigSense system includes productivity features, automated report generation, remote data transfer, wireless communication, and multiple language support.

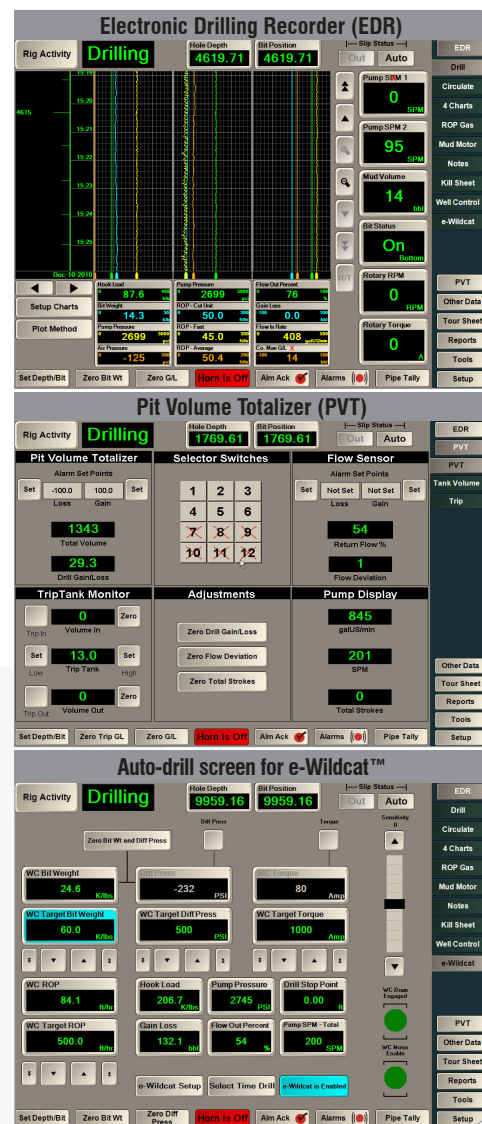
Data collection for billing and payroll purposes is made easy through automated CAODC/IADC-approved reports—relevant data is populated in the forms along with new information collected. Custom reports can be configured to meet your business needs, cutting down on the amount of time you spend administrating various business processes.

The RigSense platform enables your team to collaborate for fast, accurate decision making. The same functionality available to the driller is available to drilling engineers, rig supervisors, and other key rig personnel. RigSense rigsite workstations can be located virtually anywhere, providing consistent, high-quality information to the company man, toolpusher, and mud engineer.

With our WellData™ website information system, you can bridge the distance between rigs and offices—RigSense reports are sent directly to the home office via e-mail or can be viewed anywhere through a web browser. You can automatically populate report information from the WellData system to critical business applications to create customized reports and provide information in the timeliest manner.

Contact your local M/D Totco™ representative or visit us online to learn how our RigSense system can provide fast, accurate rig information for your drilling operations.

- EDR plots by time and depth
- Pit-volume totalizer delivers vital mud and flow information
- CAODC/IADC-approved reports and custom reports
- Modifiable alarm conditions enable users to proactively manage the drilling process
- WITS communication and advanced wireless networking



RigSense Rigsite Information System

Features and Benefits

Block height detection—block height calibration wizard displays automatically and offers guidance to setup the depth calibration and maintain data accuracy	Monitor block height operating ranges for loss of calibration due to normal rig activities
Multiple language support—English, Spanish, Portuguese, French, Russian, and Chinese	Provides flexibility in a number of operating regions
e-Wildcat™ autodrilling system integration	Monitor up to four drilling parameters at the same time, providing steady-state weight and/or differential pressure at the drill bit to improve wellbore quality and optimize the rate of penetration
Gas Watch™ system setup	Presents configuration and port setup of system in a simple, intuitive interface
Drilling optimization support integrated with our Wellsite Performance Drilling Advisor	Minimize mechanical specific energy and optimize drilling efficiency through a dedicated drillscreen
Tab-based format	Quick and easy access to commonly used operations—switches between time and depth charting at the touch of a button
Toolface directional survey capability	Provides real-time directional survey information for more precise directional and horizontal drilling Reduces the need for redundant displays; can be viewed on any onsite RigSense station
EZ View screens	Digital readouts display up to 25 channels
Unit conversion	Displays channel units in either US Customary (English) or International System (SI or metric)
Offset gamma plotting	Offset the real-time gamma ray values to the actual depth of the tool, based on its location in the bottomhole assembly
e-Totco™ multishot survey ability	Optimize controlled vertical drilling with single and multishot e-Totco surveys—can provide up to 64 inclinations per trip, reducing inclination survey time and costs
ROP gas log	Gas log information is now plotted by measured depth and with more options to choose from: Average ROP and Cut “unit” ROP