



HR-660 Coiled Tubing Injector

Proven performance for intermediate range applications

Engineered and manufactured for rugged reliability and reduced maintenance, we've manufactured over 2,200 coiled tubing injectors so you can rely on our field-proven designs.

Whether you are packaging a new, custom-built unit with the HR-660 model injector or just replacing an existing one, our injectors have the performance and dependability that is required in the toughest oilfield conditions around the world.

Designed to handle 1- to 2 $\frac{3}{8}$ -in. coiled tubing strings with superior slow speed control (inches per minute), the HR-660 has an 60,000-lb continuous lifting capacity and 30,000-lb continuous snubbing capacity.

The free-floating traction systems enhance performance and reliability in the field by reducing dynamic loads on the coiled tubing and injector components.

Options

- Manually or hydraulically deployed tubing guides available in 60-, 72-, and 100-in. radius sizes
- Multiple options for tubing depth and speed counters available
- Fold-down walkways
- Electronic or hydraulic load cells
- Fall protection device

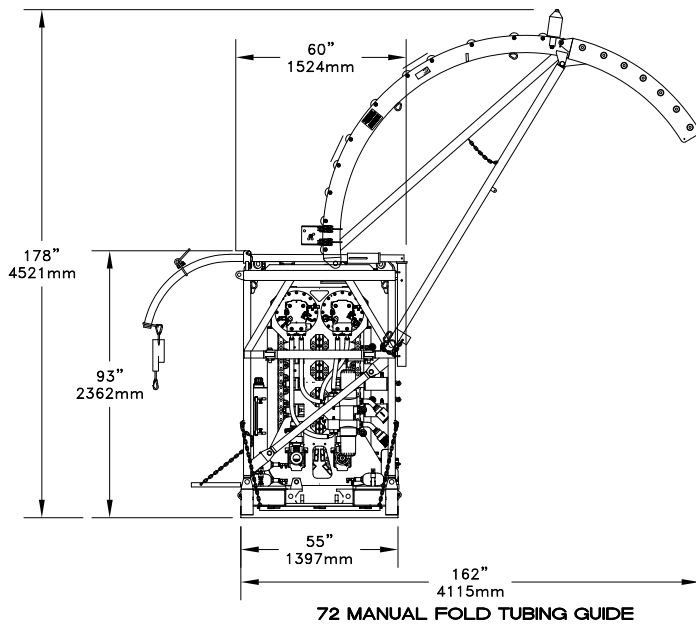
Upgrades and accessories

- Condition-based monitoring (CBM) system
- Transport stands with or without hydraulic tilt frame
- Injector or tilt frame-mounted stabbing winch
- Injector auto-lubrication system

HR-660 Coiled Tubing Injector

Specifications

Maximum speed (min. displacement)	250 ft/min
Maximum speed (max. displacement)	125 ft/min
Horsepower	100-hp continuous at 120° F
Lifting capacity through outer frame	70,000 lb
Lifting capacity from stripper	60,000 lb
Assembled weight: 72-in. gooseneck installed, no stripper	7,600 lb



HR-660 in offshore transport skid with hose reel and tilt frame

Drive system

- Deep reduction, purpose-built gear drives
- Dual hydraulic motor input (variable displacement, piston motors)
- Counterbalance valves
- Dual oil seals on gear drive output shafts for long and reliable service
- Dual spring applied/pressure released brakes mounted between the hydraulic drive motors and gear drives

Traction system

- Reduced remove/install time with our "quick disconnect" gripper system (1-3 seconds)
- Hardened and grooved single piece grippers
- Pocket-style elastomer gripper block suspension system
- Reduced injector chain maintenance due to sealed-for-life gripper carrier roller bearings
- Independent sets of traction system hydraulic cylinders
- 180-pitch heavy-duty roller chains