

NTE Thermal Packer

The NTE Thermal Packer is a retrievable, double grip packer used for high-temperature steam injection, huff and puff and geothermal production wells. The packer requires a quarter turn rotation to set and release. The thermal packer is available with an optional integral expansion joint, eliminating the need for a separate expansion joint above the packer.

The unique slip releasing system allows the slips to be released easily and smoothly, even after loads have been placed upon the slips. Additional sizes available upon request.

Features

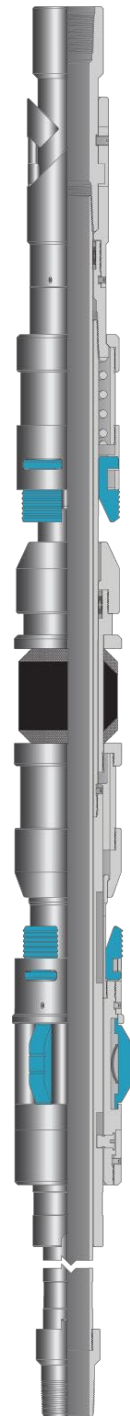
- Standard EPDM packing system rated to 550°F (287,78° C)
- Optional non-elastomeric element rated to 650°F (343,33° C)
- Adjustable shear safety release
- Premium threads available upon request

Benefits

- When run with integral expansion joint, rotational safety release disengages expansion joint from the packer
- Standard ¼ turn to right to set and release.

Applications

- High-temperature steam injection
- Huff and puff
- Geothermal production



Technical Data

CASING		PACKER			
SIZE in. (mm)	WEIGHT lb/kg	Gauge O.D.	Min. I.D. In.(mm)	Standard Connection	Product Number
6.625 168.28	20.0 - 24.0 29.76 - 35.71	5.750 146.05	3.000 76.20	3.500" EU 8 RD	606-3568-00
7.000 177.80	17.0 - 26.0 25.30 - 38.69	6.000 152.40	3.000 76.20	3.500" EU 8 RD	606-3572-00