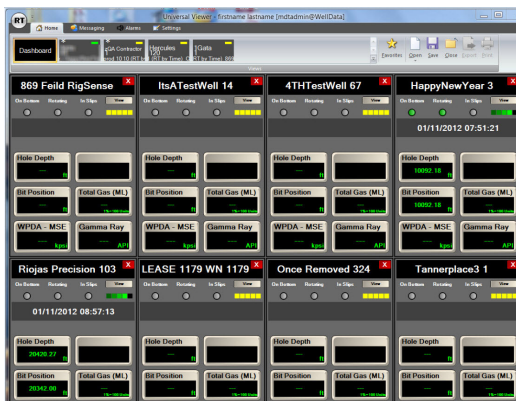


WellData and WellData/Real-Time Systems

The WellData/Real-Time (RT) application has provided remote, real-time monitoring of drilling operations since 2007, and NOV has taken this innovation to the next level with the WellData system. Our WellData system literally puts drilling information in the palm of your hand, allowing you to view well information from anywhere in the world as if you were standing on the rigsite.

The WellData system accesses information for active wells connected to the WellData system, giving you the real-time data you want and need. The data provides a true understanding of what is happening within business operations, as it happens, and its real-time analytics are an essential requirement for internal decision making. Utilizing the RigSense™ EDR system and the WellData remote well communication information system, the user is able to view drilling information in real time from a web browser anywhere. Get all the benefits of WellData RT directly on your mobile device by downloading our MobileRT application via iTunes or Google Play.



Multiwell dashboard

Features and Benefits

Multiwell dashboard

- Displays multiple rigs and their data at the same time

Well compare

- Allows the user to set an offset for the well comparison curves to line up the drilling breaks

TVD monitoring

- Provides visualization needed to monitor, manage, and optimize the drilling and placement of nonvertical wells

Directional survey view

- Summarizes survey notes and displays them on the directional survey screen

Pipe tally view

- View the current BHA and pipe tally, current active joint, and active joint tracking out of the hole during a trip

Lagged channels

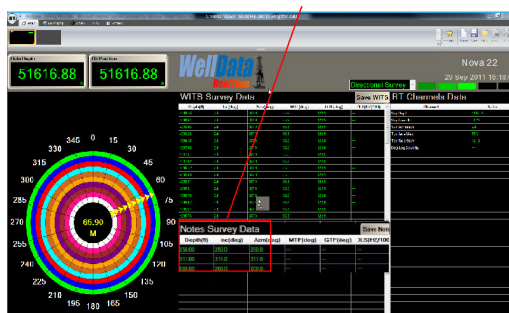
- Trace lagged channels such as gamma ray, methane GW, propane GW, total gas GW, total gas normalized, WSGD propane, and WSGD total gas

Multi-language support

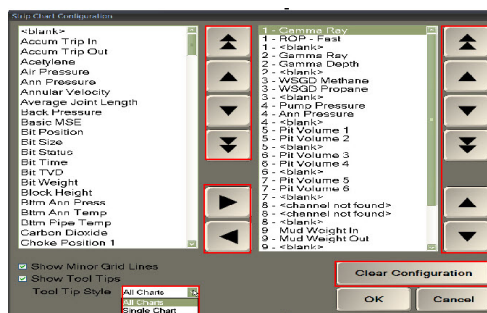
- Flexibility to switch languages in real time (English, Spanish, French, Portuguese, Russian, and Chinese)

Unit conversion

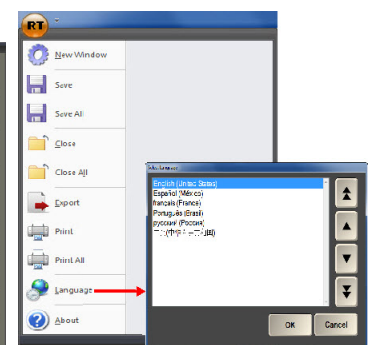
- Channels can be changed to feet per hour, feet per minute, meters per hour, meters per minute, etc.



Directional survey view



Configurable strip charts



Multi-language support