

TorqueMaster™ Jr. Model 1289 Make/Break Unit

The *TorqueMaster™* Jr. Model 1289 make/break unit provides a safe and easy way to make-up and break-out tubular tool joint connections. This fully hydraulic unit is designed for practicality and with service shop safety in mind.

Consisting of a standard fixed headstock and a traversing tailstock chuck, the unit can be custom configured to include various optional accessories, including extension beams, rolling tool support jacks, a spinner assembly, a push/pull assembly and torque logging systems. All are designed to increase the functionality of the unit. A single set of tong dies is used over the full 2 $\frac{5}{8}$ " to 8 $\frac{1}{4}$ " OD range of the unit, eliminating the need to constantly change them as the tool OD changes.

The *TorqueMaster™* Jr. make/break unit can be safely and efficiently operated by one person from a low pressure, electric powered, standalone hydraulic control console.

Features and Benefits

- **Operated by One Person** – Safe and easy to use
- **Compact Design** – Ideal for shops where space is limited

Mini-Torque II Model 1387 Make/Break Unit

The compact, self-contained design incorporates a fixed headstock and tailstock and offers fully integrated controls allowing for safe and efficient operation by one person. A single set of tong dies is used over the full 2 $\frac{5}{8}$ " to 8 $\frac{1}{4}$ " OD range of the unit, eliminating the need to constantly change them as the tool OD changes.

The Mini-Torque II make/break unit operates at a low working pressure and comes complete with a standalone electric driven Hydraulic Power Unit (HPU).

Features and Benefits

- **Operated by One Person** – Safe and easy to use
- **Clamp Force Proportional to Torque** – Reduces the risk of slippage during make/break operations
- **Self-Centering Clamp Cylinders** – Ensures torque is applied about the axial center line of the tool, ensuring accurate torque measurements and preventing thread damage
- **Tong Dies** – One set for entire OD range which can be easily changed when worn

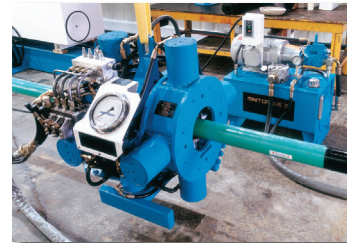
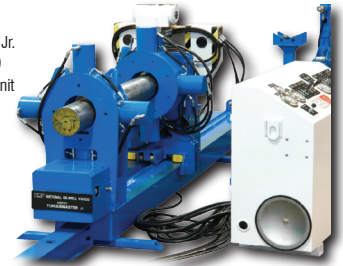
Model 8118 Coiled Tubing Motor Test Stand

The 8118 coiled tubing drilling motor test stand is a motor dynamometer test unit used to verify the performance of new coiled tubing motors as well as evaluate the performance of used motors being returned from the field.

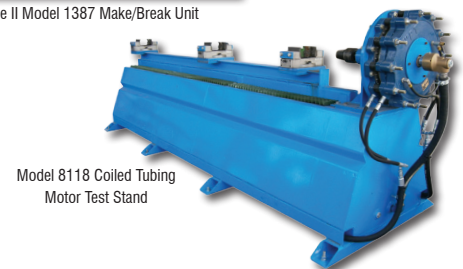
Features and Benefits

- **Safe and Easy to Use** – Can be operated by one person
- **Modular Design** – Component orientation can be altered to best suit your shop space.
- **Accurate and Reliable** – Return line suction strainer removes fluid contaminants and an accumulator reduces flow pulsations, producing more accurate test results.
- **Fully Electronic Control Console** – Touchscreen system provides precise control of system flow and torque.
- **Custom Designed Software** – Captures test results and stores in a searchable database for future reference
- **Verified Motor Performance** – Instant test results confirm the performance of the motor.

TorqueMaster Jr.
Model 1289
Make/Break Unit



Mini-Torque II Model 1387 Make/Break Unit



Model 8118 Coiled Tubing
Motor Test Stand

TorqueMaster Jr. Model 1289 Unit Technical Specifications

Headstock Chucking Capacity	2 $\frac{5}{8}$ " to 8 $\frac{1}{4}$ " diameter (with standard tong dies)
	1 $\frac{1}{2}$ " to 7 $\frac{3}{4}$ " diameter (with extra tall tong dies)
Tailstock Chucking Capacity	2 $\frac{5}{8}$ " to 8 $\frac{1}{4}$ " diameter (with standard tong dies)
	1 $\frac{1}{2}$ " to 7 $\frac{3}{4}$ " diameter (with extra tall tong dies)
Torque Capacity - Minimum	1,000 ft-lb
Torque Capacity - Make-Up	56,000 ft-lb maximum
Torque Capacity - Break-Out	70,000 ft-lb maximum

Mini-Torque II Model 1387 Unit Technical Specifications

Headstock Chucking Capacity	2 $\frac{5}{8}$ " to 8 $\frac{1}{4}$ " diameter (with standard tong dies)
	1 $\frac{1}{2}$ " to 7 $\frac{3}{4}$ " diameter (with extra tall tong dies)
Tailstock Chucking Capacity	2 $\frac{5}{8}$ " to 8 $\frac{1}{4}$ " diameter (with standard tong dies)
	1 $\frac{1}{2}$ " to 7 $\frac{3}{4}$ " diameter (with extra tall tong dies)
Torque Capacity - Minimum	1,000 ft-lb
Torque Capacity - Make-Up	56,000 ft-lb maximum
Torque Capacity - Break-Out	70,000 ft-lb maximum

Model 8118 CT Motor Stand Technical Specifications

Tool OD Range	1 $\frac{1}{2}$ " to 3 $\frac{1}{2}$ "
Torque Capacity	0 to 2,500 ft-lb
Fluid Capacity (at max flow)	124 US gpm @ 2,500 psi
Fluid Capacity (at max pressure)	100 US gpm @ 3,000 psi
Electrical	200 hp, 460V, 3PH, 245 Amp
Tank Capacity	550 US Gallon
Frame Dims	180" x 30" x 48"
HPU Dims	84" x 48" x 36"
Console Dims	21" x 18" x 48"
Tank Dims	48" x 48" x 77"

Coiled Tubing Jar Tester

The Coiled Tubing Jar Tester may be safely and efficiently operated by one person from a low pressure, electric powered, standalone hydraulic control console.

Features and Benefits

- **Operated by One Person** – Safe and easy to use
- **Compact Design** – Simple frame design and standalone console can accommodate any shop space
- **Recordable Test Results** – Log II or standard chart recorder

Little Jerk™ II Model 8071 Mini-Tong

The *Little Jerk* II Model 8071 Mini-Tong provides a safe and easy way to make-up and break-out tool joint connections on small OD tools and pipes. These tools offer a fully hydraulic system designed for practicality and safety in mind.

The *Little Jerk* II mini-tong operates at a low working pressure and can be powered by a variety of power sources.

Features and Benefits

- **Operated by One Person** – Safe and easy to use
- **Open Mouth Design** – Allows for easy loading and unloading of the work piece
- **Rigid, Compact Design** – Easily Maneuverable and operable in various horizontal or vertical positions
- **Hydraulic Lifting Cylinder** – Hydraulically adjust the vertical

Model 8079 Mini Service Center

The Mini Service Center operates at a low working pressure and can be powered by a variety of power sources.

Features and Benefits

- **Operated by One Person** – Safe and easy to use
- **Open Mouth Design** – Allows for easy loading and unloading of the work piece
- **Adjustable Clamp Force** – Reduces the risk of crushing thin walled tools
- **Clamp Force Proportional to Torque** – Reduces the risk of slippage during make/break operations
- **Clamp Arm** – Secures work piece into service center
- **Tong Dies** – One set for entire OD range and can be easily changed when worn

Safety Pipe Wrench

The NOV Safety Pipe Wrench provides a safe and effective means to manually make and break tool joint connections on Downhole tools. The wrench is designed using a lightweight, ductile material and eliminates the risk of unexpected catastrophic wrench failure that can occur while torquing with other brand pipe wrenches.

To further enhance the safety and reliability of the NOV Safety Pipe Wrench, NOV recommends the use of a digital alarmed load scale to measure the force applied to the wrench while applying torque to a connection. The scale has an 80db audible alarm that sounds once a pre-programmed force has been reached and will reduce the risk of overloading the wrench when tightening tool joint connections.

Features and Benefits

- **Lightweight Aluminum Alloy Handle** – Almost 5 lbs lighter than a standard 60" Pipe Wrench
- **Up To 8" Outside Diameter Tong Areas** – Completely replaces the need for standard wrenches
- **No Critical Load Bearing Cast Parts** – Tool yield is predictable
- **Only Ductile Alloy Materials Used** – Brittle failures are no longer a concern
- **Industry Leading Load Rating** – 8,500 ft-lb (3" - 8" O.D. Parts), 6,500 ft-lb (0 - 3" O.D. Parts)
- **Easily Inspected** – Tool designed for easy disassembly and inspection
- **Balanced Carry Handle** – Oriented for use with load scale and crane
- **Fewer Pinch Points Than Competition**



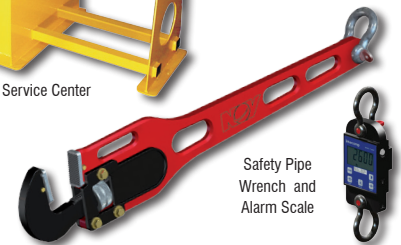
Coiled Tubing Jar Tester



Little Jerk II Model 8071 Mini-Tong



Model 8079 Mini Service Center



Safety Pipe Wrench and Alarm Scale

Coiled Tubing Jar Tester Technical Specifications

Maximum Force Tension	50,000 lbs
Maximum Force Compression	50,000 lbs
Stroke	24"
Maximum Operating Pressure	3,000 PSI
Tool Diameter Capacity	1 1/16" to 12"
Tool Length Capacity	24" to 132"
Frame Length (Including Cylinder)	18" - 8"
Dimensions (W x H)	46" x 36"
Weight	1,340 lbs

Little Jerk II Model 8071 Mini-Tong Technical Specifications

Tool OD Range	1 1/16" to 3 1/2"
Distance Between Jaws	3"
Minimum Torque	400 ft-lb
Maximum Torque	5,000 ft-lb
Operating Pressure	2,900 PSI
Required Flow	3.9 GPM
Dimensions (L x W x H)	22.5" x 20.5" x 23"
Weight	250 lb

Model 8079 Mini Service Center Technical Specifications

Tool OD Range	1 1/16" to 3 1/2"
Distance Between Jaws	3"
Minimum Torque	400 ft-lb
Maximum Torque	5,000 ft-lb
Operating Pressure	2,900 psi
Required Flow	3.9 GPM

DOWNHOLE

www.nov.com/downhole

downhole@nov.com



NATIONAL OILWELL VARCO