

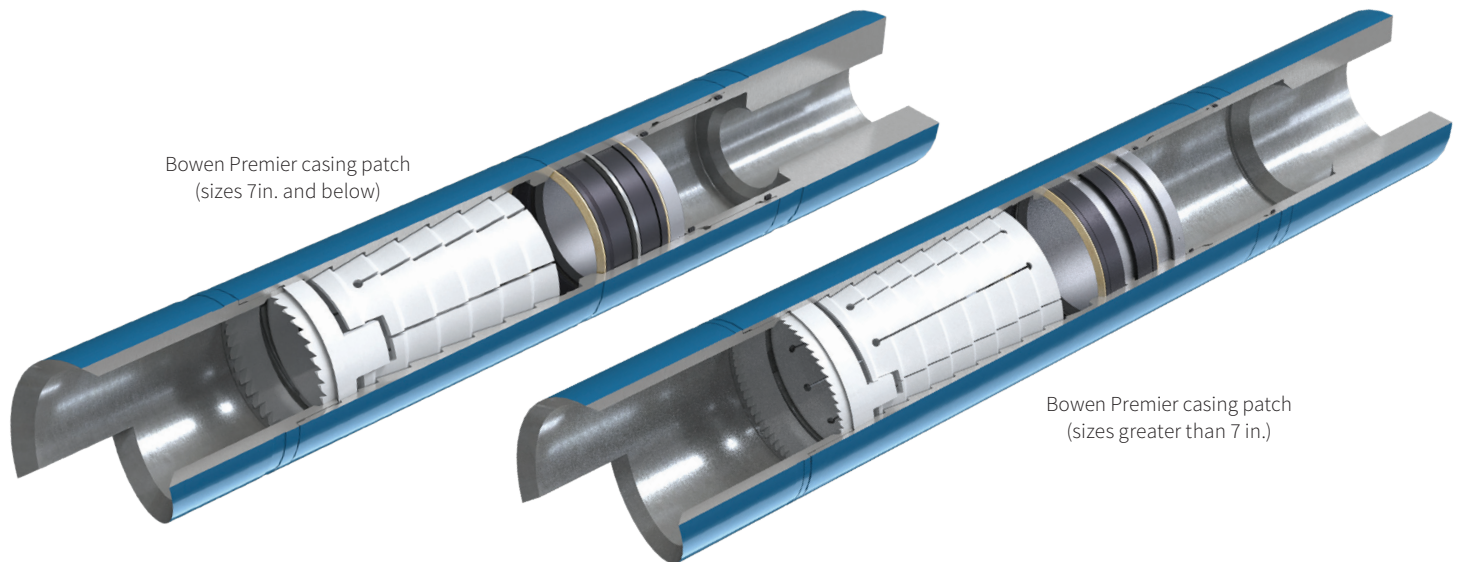
Bowen Premier Casing Patch

The Bowen™ Premier Casing Patch is an external catch tool designed to engage a previously prepared fish, pack it off, and become a component of the repaired casing, pipe, or tubing. The Bowen Premier casing patch uses the same method of engagement and release as the Bowen overshots. This method assures positive engagement and a positive seal from either direction.

The patch provides a permanent connection which remains rigid and leak-proof for many years, yet it can be released if the need arises. This patch will not restrict the bore of the casing or tubing in any matter. The Bowen Premier casing patch is designed to engage and seal off the casing, while maintaining the ability to release either during or after setting operations, should this become necessary.

Features and benefits

- Ideal solution balanced between our Standard (5k psi) and Extreme (15k psi) casing patch offerings
- Reliable operation
- Connections designed to ensure leak-proof operation
- Zero restriction within the bore of the casing or tubing
- Packer withstands most well fluids; has good resistance to gas invasion and abrasion
- Designed specifically for API casing tolerances to ensure pressure integrity



Premier casing patch size	4 ½ in.	5 ½ in.	7 in.	9 ½ in.	13 ¾ in.
Part number	508612	508501	508603	508522	508532
Standard OD	5 1¼ in.	6 1¾ in.	8 7/16 in.	11 ½ in.	15 ¾ in.
Pressure rating	10,000 psi	10,000 psi	10,000 psi	10,000 psi	10,000 psi
Maximum recommended tensile @ 0 PSI	274,390 lbs	390,910 lbs	509,420 lbs	988,160 lbs	1,640,100 lbs
Maximum recommended tensile @ 10 KPSI	115,350 lbs	153,330 lbs	124,580 lbs	260,560 lbs	235,100 lbs
Maximum recommended top sub to bowl MUT	5,400 ft-lbs	9,700 ft-lbs	16,100 ft-lbs	50,900 ft-lbs	111,800 ft-lbs
Maximum recommended bowl to guide MUT	3,000 ft-lbs	4,300 ft-lbs	6,400 ft-lbs	17,200 ft-lbs	40,800 ft-lbs