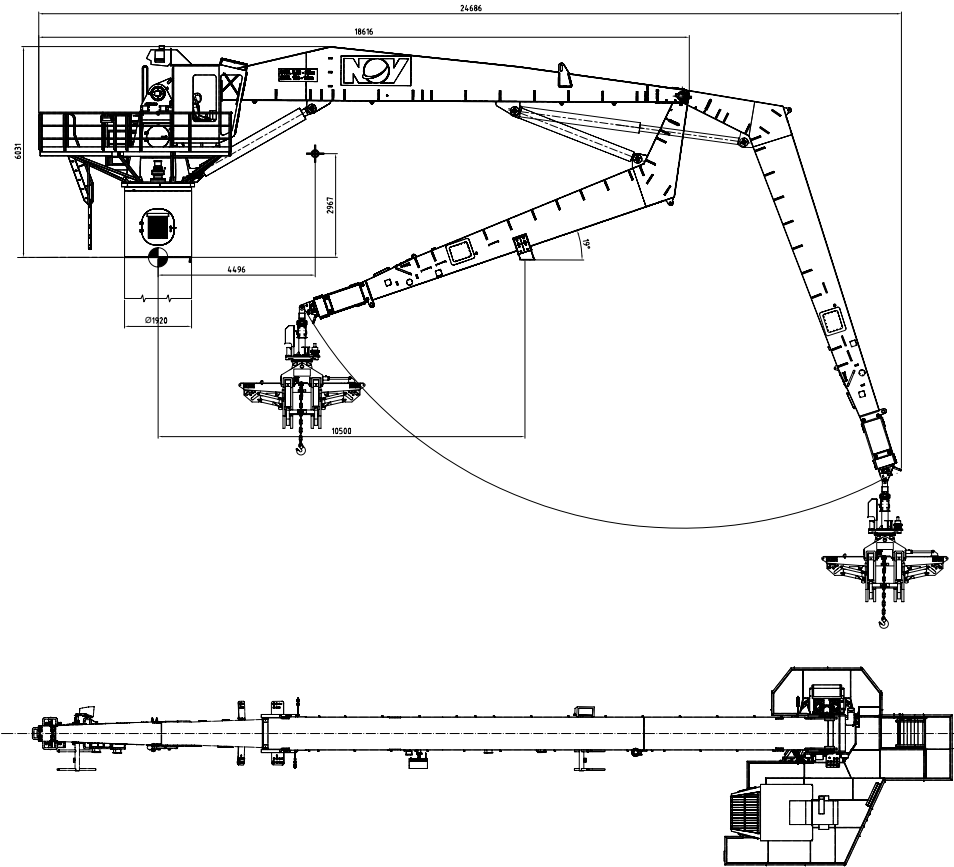


The Pipe Handling Crane (PHC) is a combined knuckle- and telescope crane. It is designed for safe and effective handling of drill pipes, drill collars and casings from pipe deck to catwalk machine and vice versa. By use of a NOV designed gripper yoke, steady lifting and hands free loading/unloading is ensured. A hook adaptor enables handling of various equipment suitable for lifting by slings. The crane is hydraulically driven by internal HPU and remote operated from

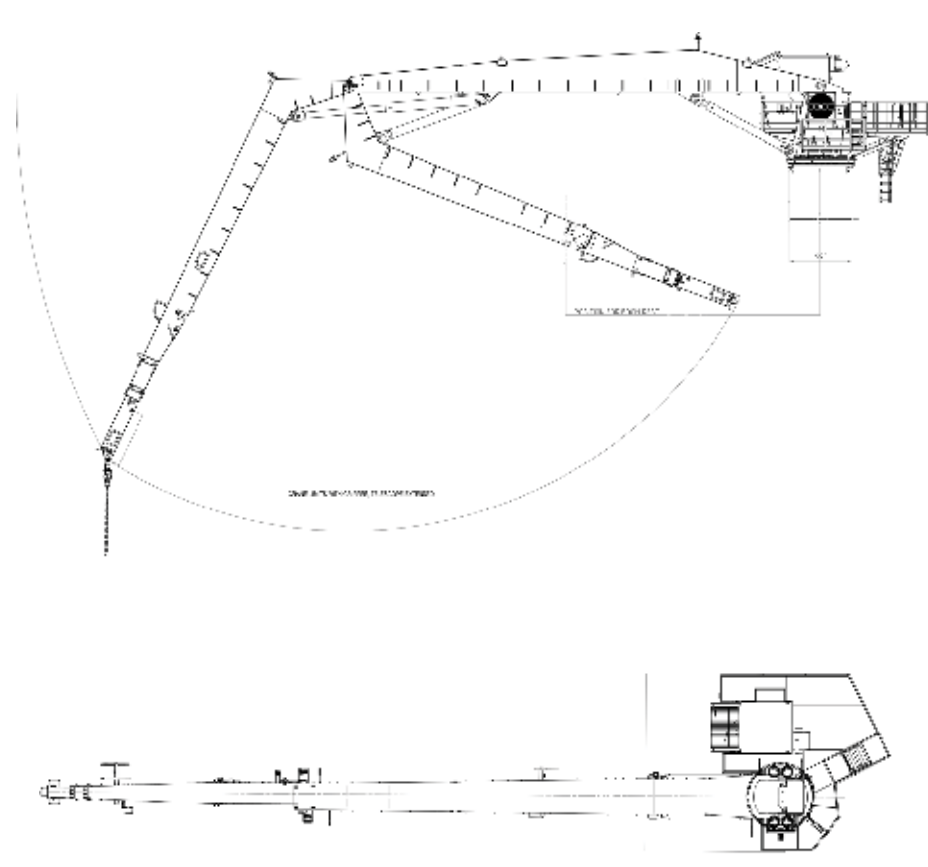
crane cabin or by radio remote. The PHC is designed for maximum efficiency and hands-free handling of pipe, collars and casings between pipedeck and catwalk area with maximum safety to personnel. The unit is designed for rough handling, easy maintenance and high reliability.

## PC 1891



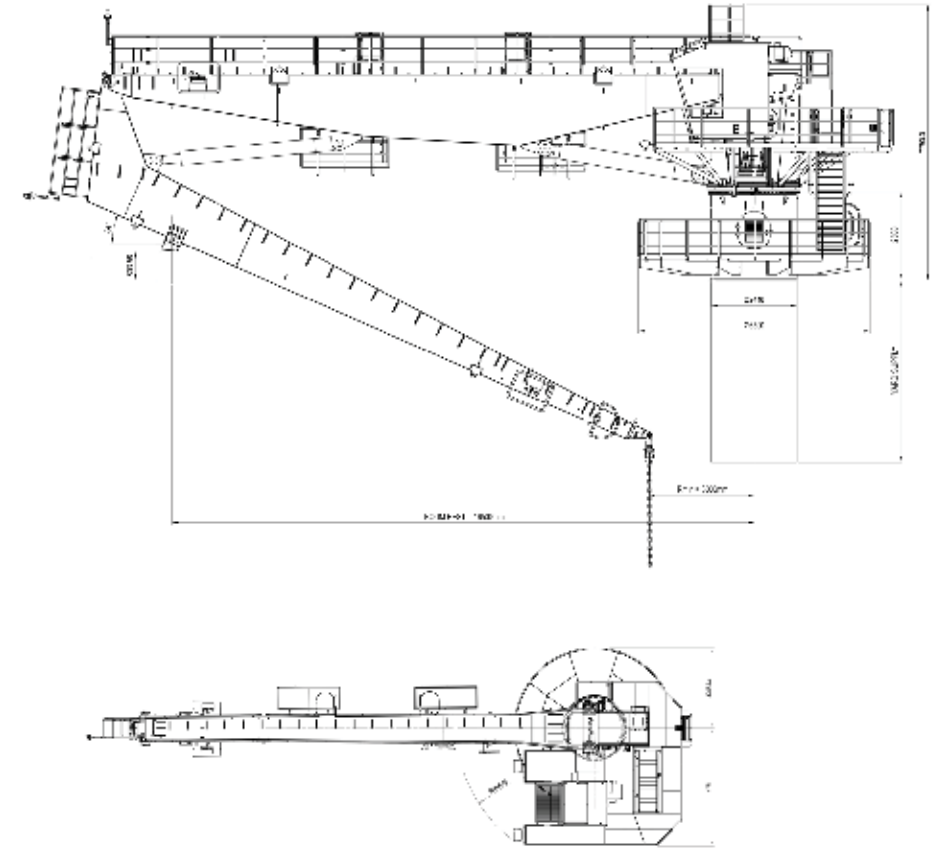
Technical specifications	
<b>DESIGN DATA</b>	
Service	Handling of equipment and drill pipes, drill collars, and casings from pipe deck to catwalk machine and vice versa
Area classification	IEC Zone 2 (Zone 1 for boom tip)
Design standards	ABS "rules for building and classing mobile drilling units", ABS " Guide for the certification of drilling systems" and DNV drilling regulative
Design temperature	-10°C to +45°C
Telescopic length	2 m
Weight	25.5 t
<b>PERFORMANCE DATA</b>	
Maximum safe working load	12 t
Maximum radius	25 m
Maximum load at maximum radius	5.5 t
Maximum radius at maximum load	12 m
Rotation	+180°
Safe working load hook adaptor	12 t

## PC 2201KCE



Technical specifications	
<b>DESIGN DATA</b>	
Service	Handling of equipment and drill pipes, drill collars, and casings from pipe deck to catwalk machine and vice versa
Area classification	IEC Zone 2 (Zone 1 for boom tip)
Design standards	ABS "rules for building and classing mobile drilling units", ABS " Guide for the certification of drilling systems" and DNV drilling regulative
Design temperature	-10°C to +45°C
Telescopic length	2 m
Weight	33 t
<b>PERFORMANCE DATA</b>	
Maximum safe working load	14 t
Maximum radius	29 m
Maximum load at maximum radius	6 t
Maximum radius at maximum load	17 m
Rotation	+180°
Safe working load hook adaptor	12 t
Utility winch SWL	5 t

## PC 2401K



Technical specifications	
<b>DESIGN DATA</b>	
Service	Handling of equipment and drill pipes, drill collars, and casings from pipe deck to catwalk machine and vice versa
Area classification	IEC Zone 2 (Zone 1 for boom tip)
Design standards	ABS "rules for building and classing mobile drilling units", ABS " Guide for the certification of drilling systems" and DNV drilling regulative
Design temperature	-10°C to +45°C
Weight	47 t
<b>PERFORMANCE DATA</b>	
Maximum safe working load	12 t
Maximum radius	32 m
Maximum load at maximum radius	10 t
Maximum radius at maximum load	17 m
Rotation	+180°
Safe working load hook adaptor	12 t
Utility winch SWL	5 t