

PROFAB

Global Fabrication
Cost Effective Solutions



NOV





Contents

About us	04
Our values and vision	05
Our people	06
Our clients	07
Engineering and drafting	08
Quality Management System	09
Equipment and facilities	10
Segments and services	12
Pressure vessels	14
Subsea and mooring systems	15
Modules, skids and platforms	16
Piping	17
Specialist structure	18
Power, water and minerals handling	19
Mining and mineral resources	20
Mineral processing and infrastructure	21
Heavy mobile mining equipment	22

About us

Profab was established in 1998 to meet the demand for a cost-effective fabricator in Southeast Asia that aligns with high-specification industries like oil and gas.

Today, we are a recognized leader in the fabrication industry, with core capabilities in the areas of:

- Pressure vessels
- Modules, skids, and platforms
- Subsea and mooring equipment
- Piping
- Specialist structures
- Heat exchangers
- Mining equipment

Our world-class fabrication facilities in Batam, Indonesia, span 14 hectares and include 30,000 m² of undercover work areas and 350 m of waterfront quay.

We excel at engineering, procuring, and manufacturing intricate structures, minimizing interface risks for our clients.



We use the latest technology and equipment for various processes, including cutting, rolling, profile forming, welding, blasting, and painting. Our skilled workforce and well-developed systems ensure globally accepted quality and safety standards, and our commitment to timely delivery is second to none.

Our products operate in more than 24 countries and on every continent except Antarctica. Our client base includes some of the world's largest and most respected organizations, and our high volume of repeat business is a testament to the strength of our capabilities.



Our values and vision



At Profab, we pride ourselves on the quality of our work and our ability to deliver complex projects and products for the most demanding applications safely and reliably.

Safety is paramount, and our commitment to protecting the environment is unwavering.

We understand that trust is earned, and we value the trust our clients place in us. We earn and maintain your trust through honesty and transparency.



Our people



Our people are at the heart of our business. Through extensive training, continuous development, and improvement processes, we have built a highly versatile, capable, and reliable workforce that delivers quality workmanship and world-class performance every time.

Most of our loyal workforce consists of direct employees, many of whom have been with us since the beginning. Our employees bring unrivaled expertise to every project, ensuring consistency, efficiency, and reliability.



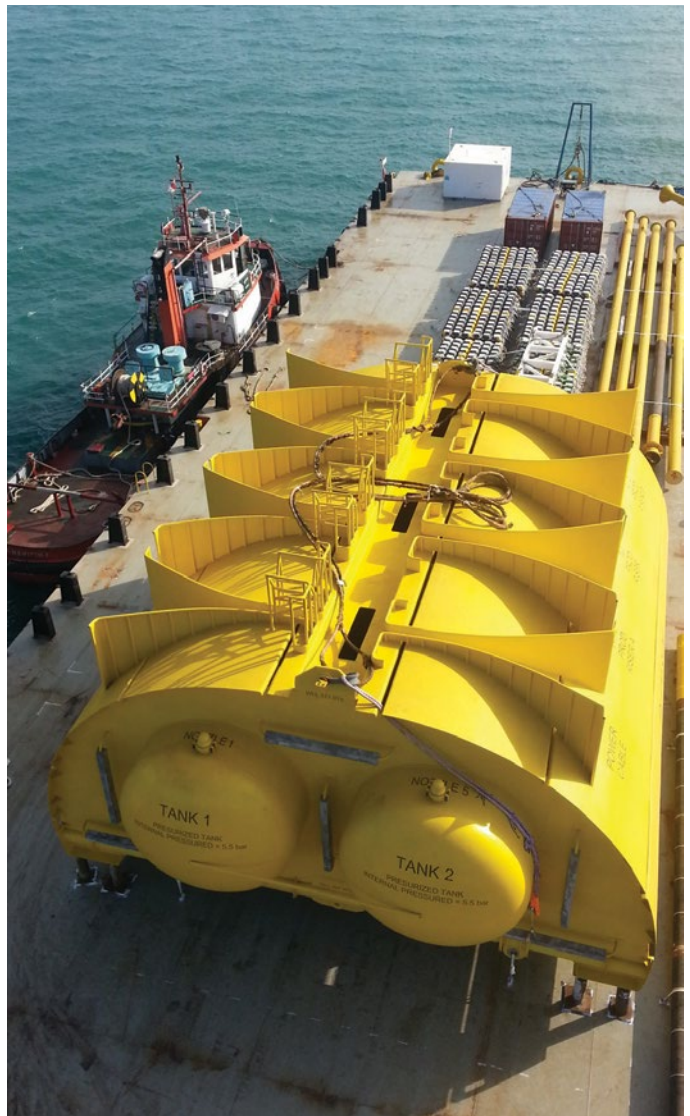
Our clients



Our products are in service in projects worldwide for some of the world's largest and most respected operators, including Chevron, ExxonMobil, Shell, TotalEnergies, Inpex, and Petrobras.

We have completed projects for contractors and equipment manufacturers, including GE, Aker Solutions, Halliburton, TechnipFMC, Subsea7, Heerema, McDermott, and Siemens.

Our success in securing repeat business is a testament to the quality of our work.



Engineering and drafting

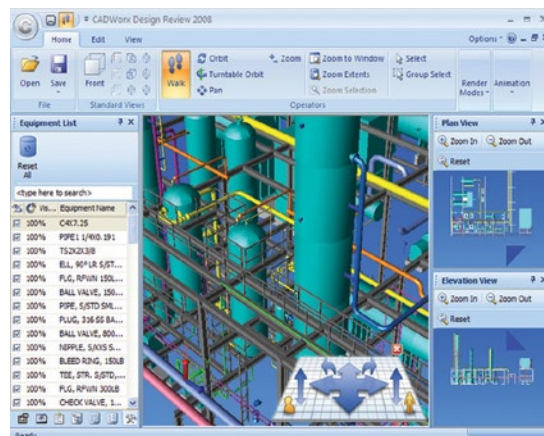
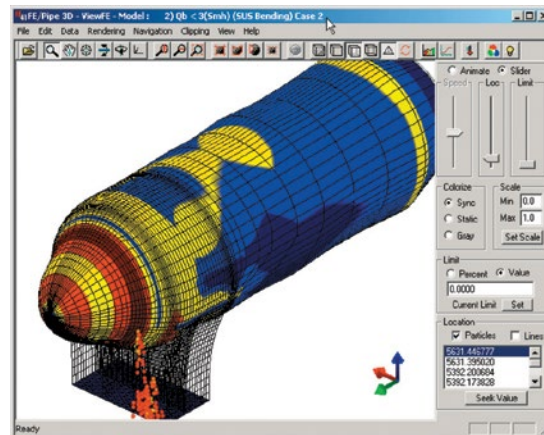
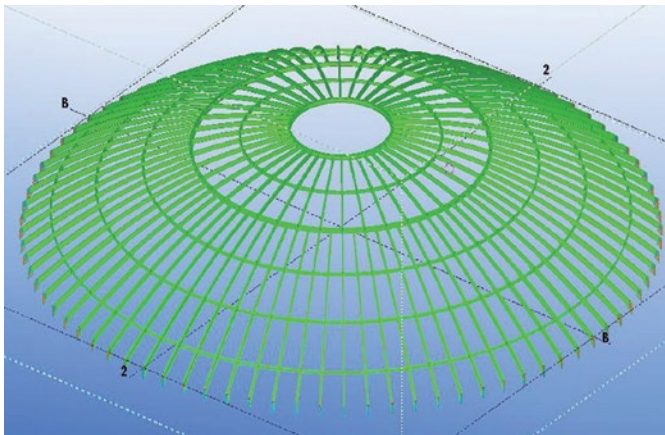


Our high-caliber team of engineers and CAD draftsmen have extensive fabrication experience. For pressure vessels and steelwork detailing, our licensed suite of engineering software includes:

- PV Elite
- Tekla
- CADworks (3D)
- NozzlePro
- AutoCAD

Our engineers and draftsmen are well-versed in a wide range of codes and standards including:

- ASME VIII Div 1, 2
- PD 5500
- AS 1210
- NORSOK M-101
- API 661 / API 1104, API 2B, API R2A
- AWS D1.1
- DNV-OS-F01 / DNV-OS-C401
- ASME B31,3 / B31.4 and B31.8



Quality Management System

Since we understand projects and the demands of project deliveries, we use the latest project management software and systems to monitor and control project deliverables.

Our extensive array of in-house production management tools for planning and progress monitoring is backed by more than 15 years of experience.

We have an ISO 9001-certified quality management system, and our facility is ASME U stamp accredited.



Equipment and facilities

Our world-class undercover workshop facilities maximize productivity and support efficient “one-stop shop” delivery of projects and products. The 140,000-m² yard includes 35,000 m² of undercover production areas that include:

Prefabrication workshop for beam fabrication, profiled sections, and rolling include:

- CNC universal beam coping machine
- Multi head flame cutting machines
- Hydraulic beam straightening machine
- Beam gantry welding machines
- Beam assembly machines
- Profile bending machine
- CNC vessel and pipe profiler
- Plate rolling machines capable of rolling plate up to 125 mm thick x 3,500 mm wide

Machine shop includes:

- Lathes
- Band saws
- Drop saws
- Vertical borers
- Hydraulic punches

Welding equipment and facilities supporting various processes including:

- Auto pipe bug and band welding systems
- Submerged arc welding including twin arc systems
- Automatic and semi-automatic FCAW and inner shield
- Overlay hot wire TIG for small bore
- Electro slag strip weld overlay machines
- Orbital TIG system
- Clean room facilities for alloy and exotic welding

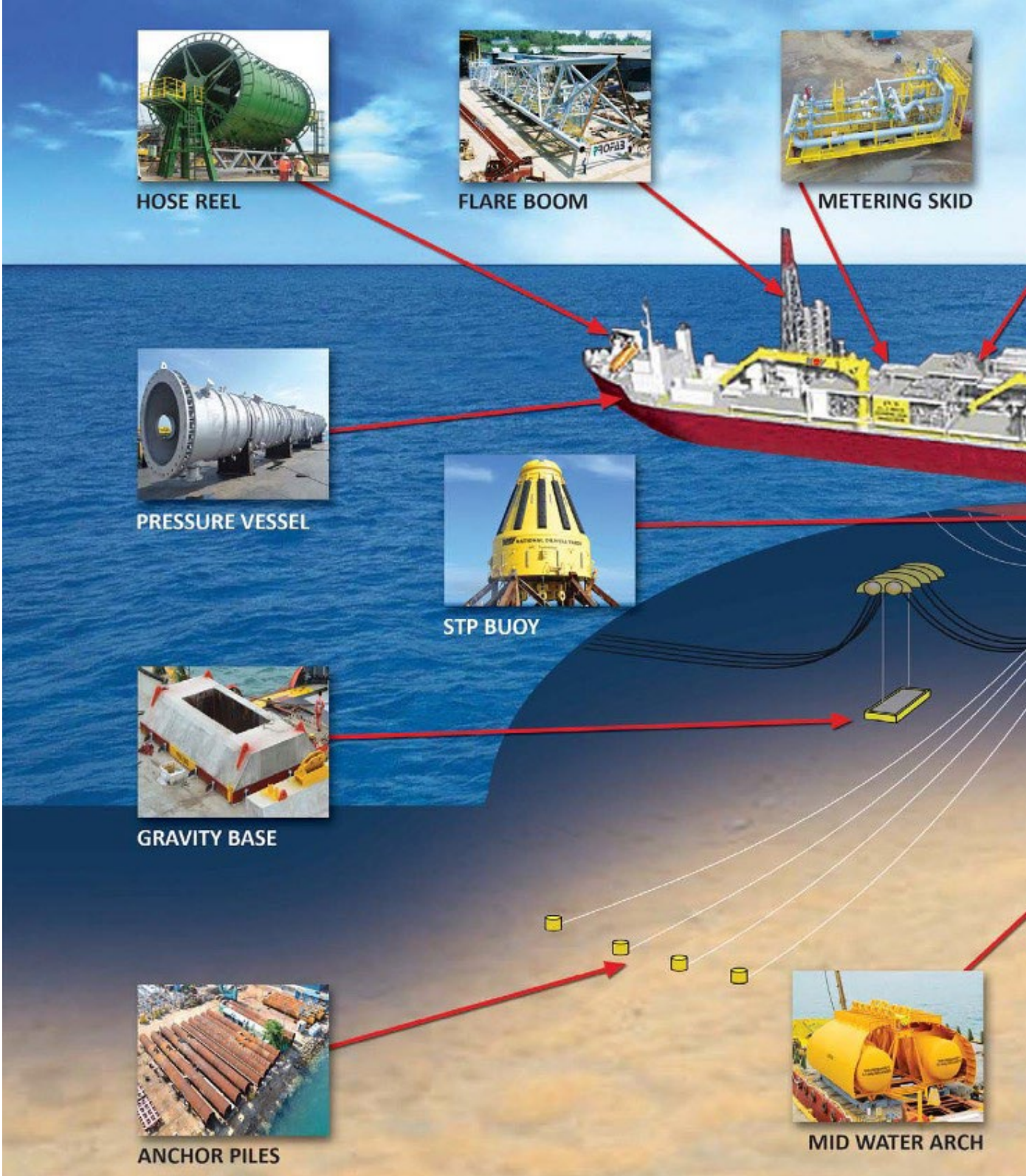
Covered workshops for blasting and painting, including automatic blast lines for plate and sections, and applying various coatings including:

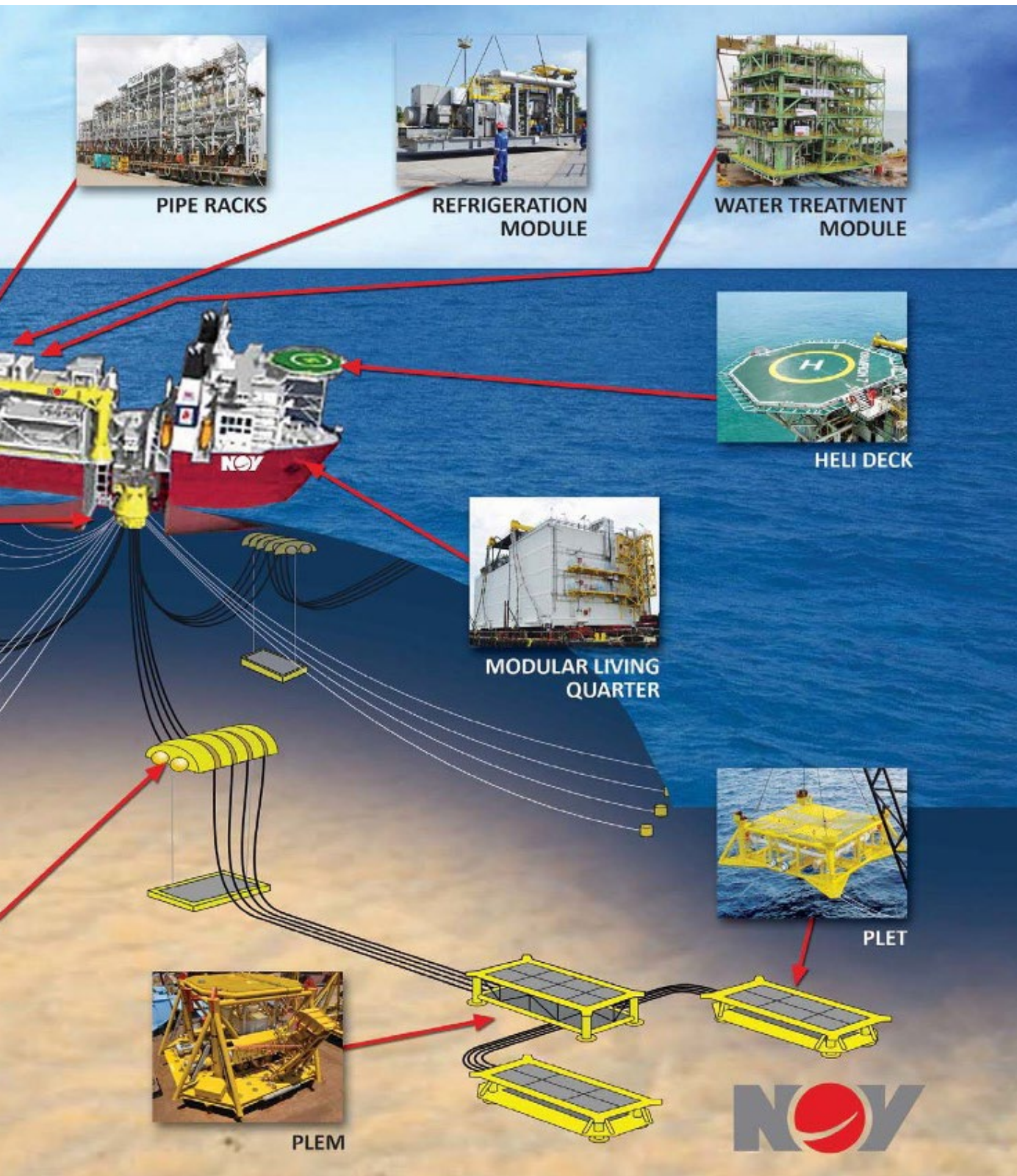
- Epoxy
- Polyurethanes
- Plastite
- Thermally sprayed aluminum
- Glass flake
- Nova coats
- Coal tar epoxy
- Passive fire protection





Segments and services





Pressure vessels



We can design and build pressure vessels for any application and any industry:

- Towers and columns
- Separators and Knockout drums
- Receivers, tanks, and storage vessels
- Carbon steel, stainless steel, internally clad, and exotic materials
- High pressure, heavy wall, and corrosive service

We carry quality accreditation/certification including ASME U, U2, R Stamp, AS 1210, and NACE MR 0175.



Subsea and mooring systems



Subsea applications are some of the most demanding in the world. Reliability and robustness are paramount. We have vast experience fabricating subsea and floating structures including:

- Midwater arches
- Gravity bases
- Christmas tree structures
- PLEMs and PLETs
- Driven, drilled, and suction piles
- Protection frames
- Mud mats

Applicable codes and standards include AWS D1.1, DNVOS-(401), and NORSOK M-101.



Modules, skids and platforms



Modularization offers numerous benefits including improved quality, effective logistics, efficient project schedules, and reduced costs. We are experts in building modules, skids, and platforms for onshore and offshore projects, including:

- Firewater, refrigeration, metering, chemical dosing, MEG, TEG fuel gas, and many other skids
- Separators and production test skids
- Accommodation and utility modules
- Process modules for onshore plants, offshore topsides, and FPSO/FSUs
- Compressor skids and modules
- Wellhead platforms and decks

Applicable codes and standards include AWS D1.1, DNVOS-(401), and NORSOK M-101.



Piping



We can prefabricate piping spools for onshore and subsea applications from a variety of materials. We can also fabricate associated supports and structures, such as walkways and access platforms, and deliver clad pipe and fittings to support corrosive environments.

Applicable codes and standards include ASME B31.3, DNV-OS-F101, Norsok M-601, and API 1104.



Specialist structures

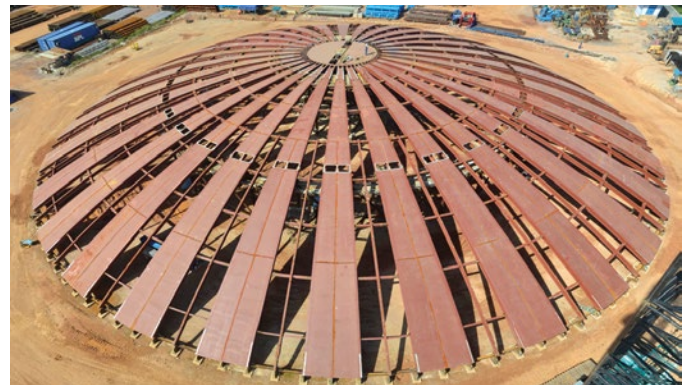


We can deliver structural steelwork for any service or application. We work with a range of codes and understand the varying demands of different applications.

Our experience includes:

- Stingers
- Catwalks and pipe bridges
- Pipe racks
- Flare towers and flare stacks
- Offshore jackets
- Jetty and wharf structures including dolphins and decks
- LNG tank roofs
- Piles
- Hose reels
- Platforms and access structures

Applicable codes and standards include AWS D1.1, DNV-OS-(401), NORSOK M-101, and API 650.



Power, water and minerals handling



Our fabrication services are versatile and suitable for many industries. We understand fabrication in all its various forms and modern industry requirements. We have the expertise and experience to fabricate the following:

- Wave generation equipment
- Wind turbine structures and pile
- Minerals handling equipment such as stacker reclaimers and ship loaders
- Modules for minerals handling
- Power generation modules
- Pulleys and conveyor system components



Mining and mineral resources



We are known for providing our mining customers with high-quality, low-cost manufacturing services. We have the capability and experience to manufacture various mineral processing products including:

- Pressure vessels and autoclaves
- Chutes, hoppers, storage, and thickener tanks
- Modular structures, large structural/plate fabrication
- Ball and sag mills
- Pipe spooling - carbon steel and exotics
- Stackers and reclaimers
- Conveyor systems
- Rail car dumpers

Our internal engineering resources allow us to create manufacturing packages from the customer's design model and/or isometric drawings. We offer various internal liner options, including rubber lining, ceramic tiling, high wear-resistant plates, internal cladding, and other available materials.



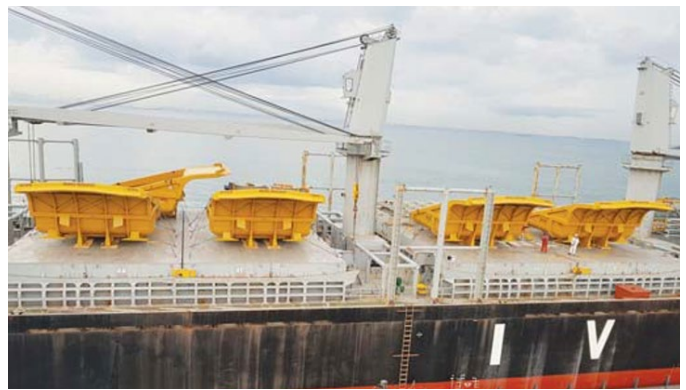
Mineral processing and infrastructure



Heavy mobile mining equipment



We also manufacture truck bodies, water tanks, and large dragline and dipper buckets for our mining customers. All welding qualifications and compliance are according to AWS D1.1 and/ or AS1554-1 & 4. We use only the highest quality wear-resistant, high-tensile quenched and tempered plates to fabricate all truck bodies at our facility in Batam.





NOV has produced this brochure for general information only, and it is not intended for design purposes. Although every effort has been made to maintain the accuracy and reliability of its contents, NOV in no way assumes responsibility for liability for any loss, damage or injury resulting from the use of information and data herein. All applications for the material described are at the user's risk and are the user's responsibility.

© 2024 NOV. All rights reserved.
JIG 240964-EE-PFT

**Completion and Production
Solutions Headquarters**
10353 Richmond Avenue
Houston, Texas 77042
USA

Jl. Bawal Kav V
Batu Merah - Batam Island
Indonesia 29432
Phone: +62 778 413 250
Fax: +62 778 413 260

3A International Business Park
ICON@IBP Tower A #12-06/09
Singapore 609935
Phone: +65 6774 7997
Fax: +65 6774 7887



process-systems@nov.com

nov.com/process-systems