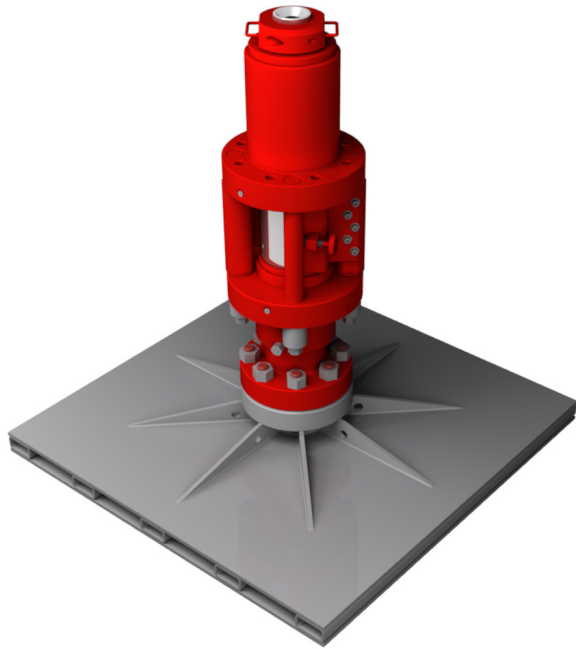


Side Door Stripper Assembly



Our side door stripper assemblies incorporate a single hydraulic circuit, reducing complexity and potential leak paths, reducing overall stack height and weight.

Utilizing our field-proven design, our side door stripper assemblies are easy to maintain and provide accessibility to the pack-off element and bushings. This functionality allows quick packer element replacement while pipe is stabbed, reducing NPT and safety risk.

Suitable for various applications and working environments, the Texas Oil Tools™ side door stripper assembly continues to lead the industry in reliable well control safety equipment.

Features and benefits

- Compact profile allows for an overall reduced stack height and weight
- One hydraulic circuit reduces complexity and potential leak paths
- Pack-off piston above the element allows you to use the piston to push the old one out
- Extended wear bushings reduce the unsupported distance between injector blocks and stripper assembly
- The side door design provides ease-of-maintenance and accessibility to the pack-off element and bushings, allowing them to be replaced under pressure

Temperature and service

- H₂S service: -20°F to 250°F (-20°C to 121°C)
- North Sea service: -25°F to 200°F (-32°C to 93°C)
- Arctic: -50°F to 200°F (-46°C to 93°C)
- Geothermal (steam): 75°F to 500°F (24°C to 260°C)

WCE Recertification, Inspection, and Repair

When it comes to pressure control equipment, you can never be too safe. With increasingly stringent industry standards on the documentation and recertification of your equipment, we have made sure that we are able to promptly service your equipment by allocating additional resources to our service and repair department.

Our state-of-the-art operation provides everything from simple redress to full recertification to get your equipment back in the field.

[Learn more about our offerings here.](#)

Equipment Specification

Specifications

Model	Bore in.	Working pressure psi	Connections		Dimensions		
			Lower end	Tubing range in.	Weight lb	Height in.	OD in.
DSY4	2.06	10,000	Quick Union	1.000 to 1.500	262	38.75	9.92
DS74	2.50	10,000	Quick Union, Flange, or Hydraconn connection	1.000 to 1.750	250	33.97	11.40
DSH4	3.06	10,000	Quick Union, Flange, or Hydraconn connection	1.000 to 2.375	340	42.38	11.40
DSH6	3.06	15,000	Quick Union, Flange, or Hydraconn connection	1.000 to 2.375	580	48.10	12.40
DSA4	4.06	10,000	Quick Union, Flange, or Hydraconn connection	1.000 to 2.875	925	46.00	17.20
DSA6	4.06	15,000	Quick Union, Flange, or Hydraconn connection	1.000 to 2.875	775	48.00	16.38