

# OrionNET v3.5 Real-time Data Acquisition Software

## Functionality that meets your real-time data needs

- Capture, aggregate, and display the data at the wellsite while performing advanced calculations locally
- Monitor real-time data from multiple job locations in Max Completions™
- Track activity on location through quick predefined or manual comments
- Pre-populated advanced screen layouts
- Acquire and store data automatically on system startup or on demand
- Capture data from the CTES™ Orion™ hardware system or other third-party hardware
- Data sources supported
  - CTES Orion V, CTES Orion IV, CTES Orion III
  - ASCII via Serial (Non -CTES data acquisition systems)
  - ASCII via TCP/IP
  - OPC client: Reads data from an OPC (OLE for Process Control) server
  - WITS0: Wellsite Information Transfer Specification Level 0 serial input


## Enhancements

- Auto push data to Max Completions and simplified start-up screen
- Default system channels added
  - Manual
    - CSG 1 ID
    - CSG 2 ID
    - CT OD
    - Density
    - Pump rate
    - Return rate
    - Viscosity
  - Derived channels
    - Differential pressure
    - Bottoms up time
    - Annular volume
    - Annular velocity



**Customer Support:** 24/7 remote diagnostics and support from the CTES team located in Conroe, TX, USA

# OrionNET v3.5 Data Acquisition Software

 **Quick** at-a-glance diagnostic view helps the user—along with CTES—easily identify issues encountered in acquisition from four datasource types: Orion V, Orion IV, ASCII via Serial, and derived channels.

OrionNET Diagnostic messages for Orion IV and Orion V data acquisition systems include suggestions for resolving issues related to disconnected hardware.

## Simple diagnostic errors display for Orion V data acquisition system

### Out of Range (displayed) (Analog)

Appears if a 4-20mA sensor's output signal is outside of the expected operating range

### Open Circuit (displayed) (Analog or Digital Channels)

Indicates the sensor and/or cable(s) associated with the channel is disconnected or damaged

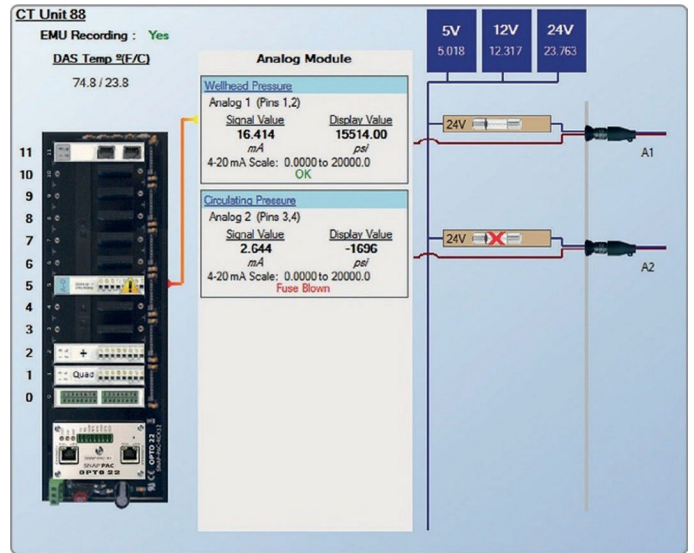
### Short Circuit (displayed) (Analog or Digital Channels)

Typically occurs when the associated cable is damaged or wires to the sensor are terminated improperly

### Fuse Blown (displayed) (Analog or Digital Channels)\*

Occurs when a sensor's perceived power use exceeds that set by the inline fuse between voltage supply and ground

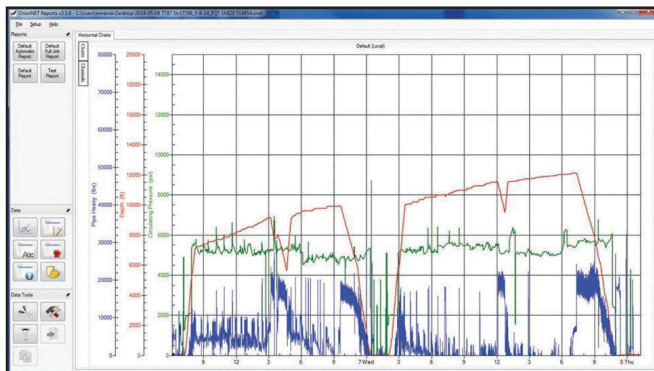
\* Not available for the Orion V DAS for Hazardous Areas.



Orion IV, ASCII via Serial, and Derived Channel diagnostics also available.

## OrionNET reports functionality

- Analyze data post job
- Complete customizable post-job reports
- Merge multiple databases into one
- Add extra job-information data to a database
- Integrate with other hardware/software systems via ASCII or WITSO output streams
- Set alarms and warnings (high and low) on every channel



Create reports tailored to your specific requirements in the Report Designer.

