

# ASEP MiniLog Real-time Wireline Data Monitoring

Upgrade your capabilities and record the critical parameters from your wireline runs with our MiniLog™ and MiniLog™+.

Display and record wireline depth, speed, and tension data to manage slow-speed operations and allow post-job analysis and training. Our battery-powered MiniLog can be easily fitted to any winch to provide up to 72 hours of continuous data, as it does not need a separate electrical supply. The MiniLog comes with a battery charger as standard. Our MiniLog+ uses the onboard power supply of a winch unit, providing unlimited operational time.

Both versions are fully Zone-2 ATEX compliant and use a pressure transducer for tension measurement and an encoder for depth and speed measurement. Color-coded cable connectors and universal mountings allow easy fitment to BaseLine™ and FlyLine™ winches, using the MP16 or MP20 measuring heads.

Supplied with SmartOffice™ software for fast and clear analysis of your data with concise graphical output.



Anson | Artex | ASEP | Axelson | DynaWinch | Elmar

## Features and benefits

- Real-time depth, speed, and tension display
- CE marked and ATEX certified for use in Zone-2 areas maximizes asset mobility
- Fast download with USB connection
- Backlit display for a clear view night and day
- Supplied with SmartOffice software for fast analysis and display of your data
- Plug-and-play system provides ease of operation
- Upgrade basic winches to give data logging capability
- Analyze and review data post job
- Extensive data recording for a complete picture of your operations
- Compact, lightweight, and portable for download in a safe area

## MiniLog

- Battery operated, makes installation simple with no electrical connection to your winch
- 72-hr continuous rated operating time, extensive data recording for a complete picture of your operations
- On-screen charge status indicator
- Includes encoder, pressure transducer, and mounting kit for retrofitting

## MiniLog+

- Uses onboard power supply for continuous recording

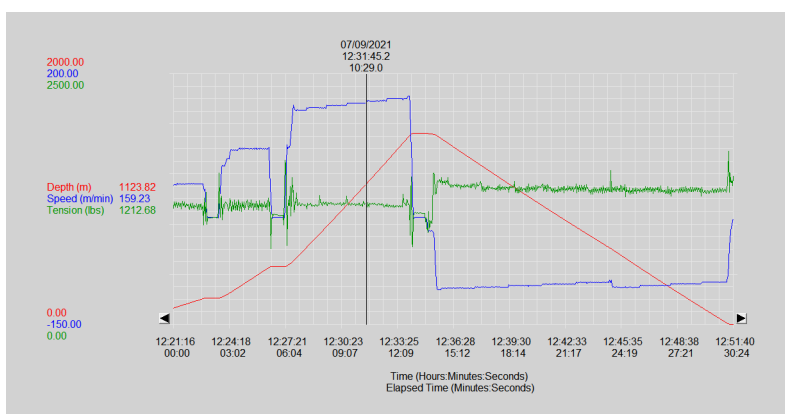
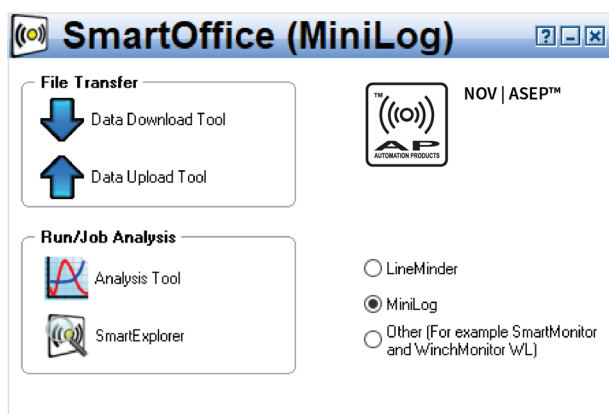
## SmartOffice software

By utilizing our SmartOffice software suite, the MiniLog becomes a powerful reporting and analysis tool.

Your data is quickly downloaded from the MiniLog via a laptop, PC, or computer system, using the USB connection when moved to a safe area.

The SmartOffice software allows you to create depth, speed, and tension graphs. This allows you to show complete runs or home in on detail views where you need it.

Printed graphs or PDF files are created with just a few clicks of your mouse to complete post-job reports or for presentations.



## Memory logging operations

Both MiniLog units offer real-time display and recording of line depth, speed, tension, and time. The display toggles between speed/time and depth/tension, allowing line speed to be displayed and monitored for use in memory logging applications where line speed is critical to operations.

These units can be easily transported in an optional rugged transport case for use with multiple winches where operations require data recording.

## Specifications

ATEX	Ex II 3G Ex nR IIB T6 Gc
Protection	IP67
Operating temperature	-20°C to +50°C
Humidity	10% to 90% non-condensing

## Weights and dimensions

Including button, switch, and connectors	Length	Width	Height	Weight
MiniLog	4.72 in. (120 mm)	7.08 in. (180 mm)	6.29 in. (160 mm)	5.51 lb (2.5 kg)
MiniLog+	4.72 in. (120 mm)	7.08 in. (180 mm)	6.29 in. (160 mm))	5.29 lb (2.4 kg)

Anson | Artex | ASEP | Axelson | DynaWinch | Elmar