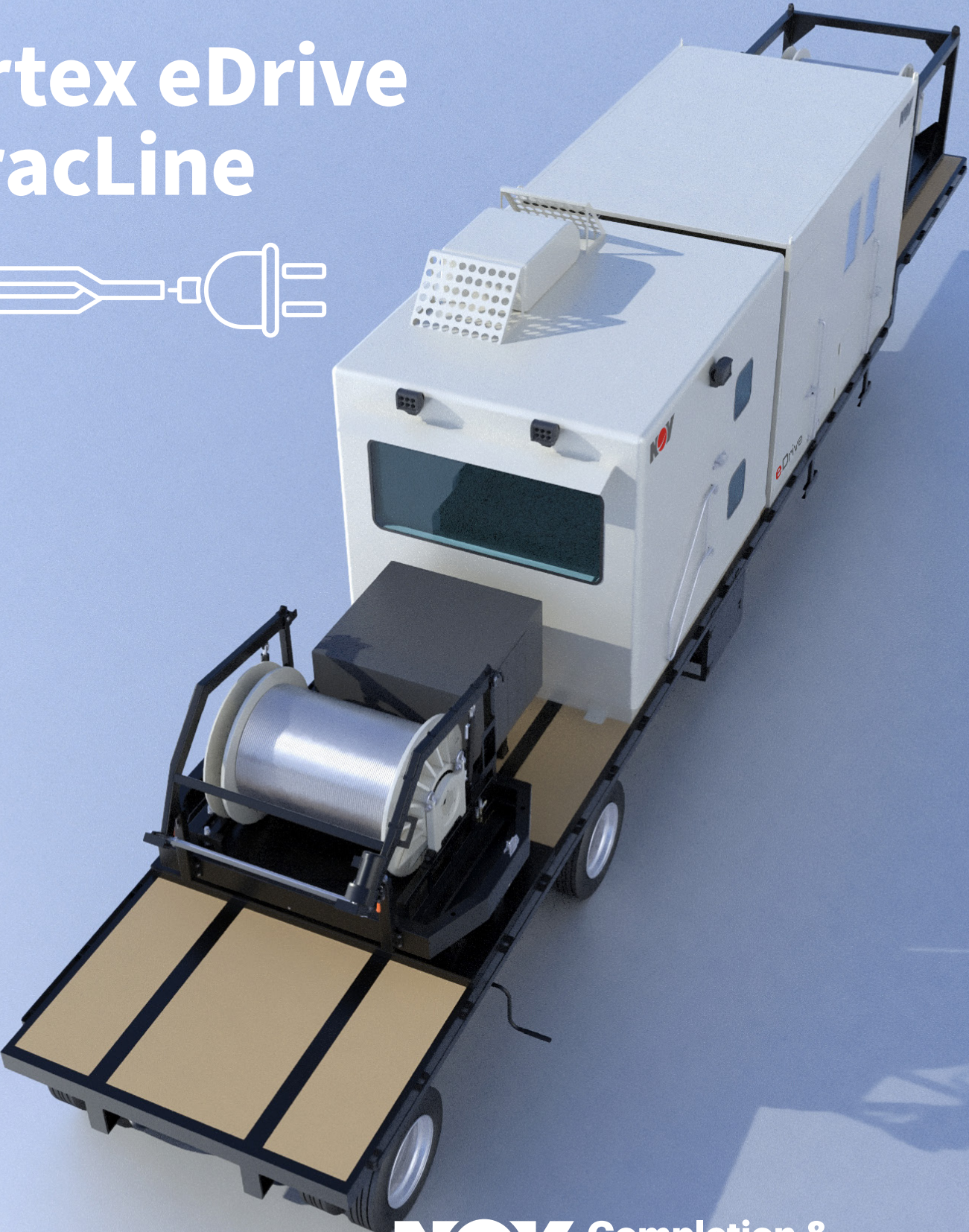
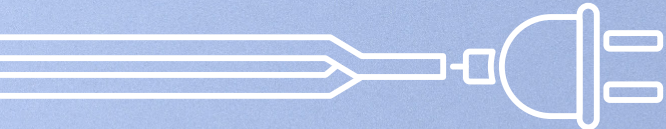


Artex eDrive FracLine





Artex eDrive Fracline

The high-performance, low-carbon solution for your wireline well interventions

The fourth-generation direct drive full electric wireline winch from NOV Elmar™ allows you to operate more efficiently and more profitably—with drastically reduced carbon emissions. Built upon years of proven reliability, this technology eliminates direct CO₂ emissions, reduces wellsite NPT, minimizes maintenance, and provides enhanced remote diagnostics. Engineered to deliver superior performance, our Artex™ eDrive Fracline units can be customized and configured in a variety of ways to suit your budget, climate conditions, performance standards, and environmental requirements.

Investing in a Low-carbon Future

The eDrive was engineered to help your business comply with the industry’s net zero commitments while maximizing your return on capital investments and increasing your competitive advantage. Replacing your traditional diesel-driven unit with the eDrive Fracline eliminates 100% of its direct carbon emissions and reduces noise pollution. The environmentally friendly battery system contains zero toxic heavy metals. These benefits enhance your ESG credentials—attracting new customers and investors.

Flawless Wellsite Performance

The proven reliability of electrical winch technology will help drive your wireline fleet performance and reduce your operational costs. The eDrive wireline unit includes several features to enhance wellsite efficiency. Auto spooling, constant speed, constant tension, auto jarring, cruise control, brake check, and remote diagnostics all help to mitigate the risk of unplanned events such as tool pull offs at surface. Additionally, the multiple remote-control options allow you to run your operations from anywhere, allowing for reduced crew sizes and incidents.

Features and benefits

- Modular 3-piece unit comprising of winch, cabin and power unit
- Zero direct CO₂ emissions to support ESG goals
- Advanced controls and operator aids
- Automation ready
- Enabled for remote wellsite operations, reducing crew size at location
- Energy efficient system with low maintenance requirements
- Condition, health, and performance monitoring for data-driven insights
- Reduced maintenance costs
- Cleaner, quieter, and safer systems for improved HSE performance
- Redundancy and contingency systems to keep operations running
- Reduced wellsite NPT
- Remote diagnostics and troubleshooting support
- Reduce risk of pull offs and mitigation of other operator error issues
- Ultra-reactive winch performance
- Full well-site visibility with onboard cameras

Artex eDrive Fracline

The unit features advanced control software, power recovery and storage, powerful permanent magnet motor technology, and variable frequency drives to ensure every variation of your wireline operations run smoothly. The system has been engineered and optimized to deliver breakthrough wireline performance with up to 2,500ft/min running speeds.

Your wellsite operations will benefit from the reduced stage transition time made possible by the slewing base for central pad positioning to access multiple wells. This also reduces wear and strain on the wireline thus reducing risk of premature failures.

The eDrive’s power recovery and advanced battery system offers an extended lifespan, higher power density, and three levels of battery capacity to suit your needs. To maximize reliability and performance, it features a unique cooling system that guards against wellsite NPT events from overheating of electrical components.

Superior Safety Features

The eDrive Fracline offers unparalleled safety benefits for your business. Its fully-remote operations control station means less personnel at the wellsite and a reduced risk of unintentional pump offs.

The unit also features an upgraded battery system with no thermal runaway which can cause acid leaks and catastrophic explosions in standard lithium-ion batteries.

Savings You Can See

Your bottom line will see an immediate benefit from the eDrive’s remote operational capabilities—allowing you to centralize expertise. You’ll no longer waste valuable time and money hunting for experienced hands in a volatile labor market.

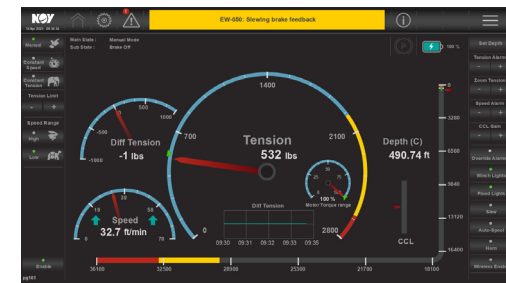
Savings can also be seen in the reduction of regular and unplanned maintenance, cost of fuel, hose replacement, and more. Your business can’t afford not to invest in this cost-saving technology.

Quality and Support

Our eDrive units are built to meet your exact requirements by experienced craftsmen in our US and UK facilities. All equipment is rigorously tested and certified before leaving our facilities to ensure seamless adoption for our customers. Additionally, our 24/7 aftermarket support department is always available should anything unexpected happen in the field.

Why NOV?

NOV Elmar is committed to providing our customers with premium products and services that reduce carbon emissions during traditional wireline operations. In making our customers’ operations less impactful and net-zero compliant, we are contributing to a more sustainable interventions industry. This is all without compromise to our 40-year legacy of delivering the highest-quality wireline products on the market.



MCD - Master Control Display



Operator's station



Regional Centers:

UK

Toftills Avenue
Midmill Business Park
Kintore, Aberdeenshire
AB51 0QP, Scotland
United Kingdom
T +44 1224 740261
wireline@nov.com

USA

8017 Breen Road
Houston, TX 77064
United States of America
T +1 346 223 5000
wireline@nov.com

Singapore

7 Loyang Way
Singapore 508721
T +65 6546 0928
wireline@nov.com

Canada

(DynaWinch Products)

6771 - 84 Street SE
Calgary, Alberta
T2C 4T6
Canada
T +1 403 319 2333
wireline@nov.com

UAE

Street N400, Plot MO 0320
P.O Box No: 61490
Jebel Ali Free Zone
Dubai, United Arab Emirates
T +971 4 810 0100
wireline@nov.com

Regional Sales, Rental & Service Locations:

Al-Khobar, Saudi Arabia

T +966 13 835 3061
wireline@nov.com

Abu Dhabi, UAE

T +971 2 550 1875
wireline@nov.com

Groot-Ammers Netherlands

T +31 64 617 0523
wireline@nov.com

Stavanger, Norway

T +47 51 81 81 81
wireline@nov.com

Perth, Australia

T +61 8 6279 5799
wireline@nov.com

New Iberia, USA

T +1 985 872 5215
wireline@nov.com

Odessa, USA

T +1 432 688 1425
wireline@nov.com

Baku, Azerbaijan

T +99 412 505 8282
wireline@nov.com

Mumbai, India

T +91 22 6174 3000
wireline@nov.com

Macaé, Brazil

T +55 22 9811 11400
wireline@nov.com

Neuquén, Argentina

T +54 92 9940 90134
wireline@nov.com

Representative Offices:

Beijing, China

T +86 10 5707 0789
wireline@nov.com

Corporate Headquarters

7909 Parkwood Circle Drive
Houston, Texas 77036
USA

Completion and Production Solutions Headquarters

10353 Richmond Avenue
Houston, Texas 77042
USA



NOV Inc. has produced this brochure for general information only, and it is not intended for design purposes. Although every effort has been made to maintain the accuracy and reliability of its contents, NOV Inc. in no way assumes responsibility for liability for any loss, damage or injury resulting from the use of information and data herein. All applications for the material described are at the user's risk and are the user's responsibility.

© 2023 NOV Inc. All rights reserved.
JIG 00-CAPS-WLF-0000