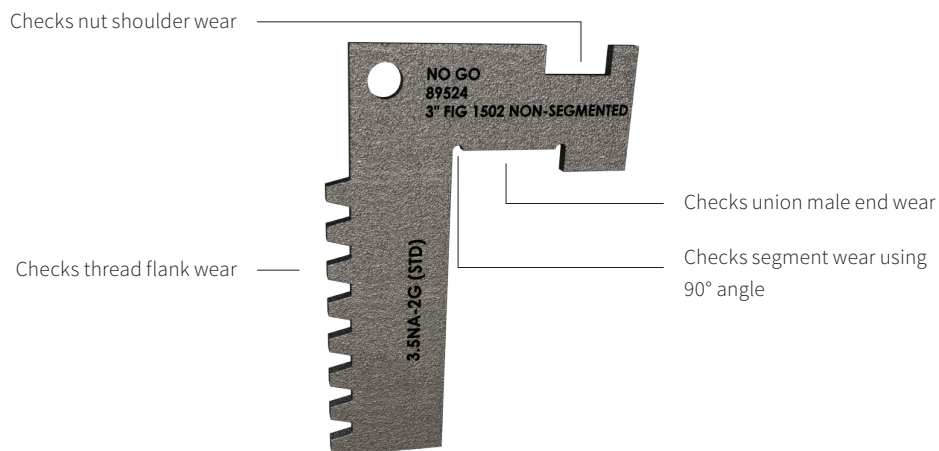
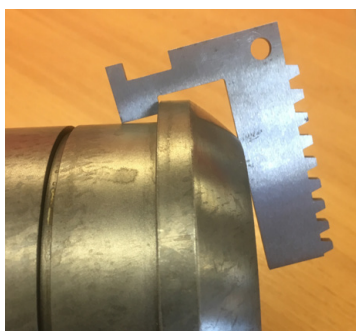


Combined Union Wear Gauge

Our **Combined Union Wear Gauge** is designed to check for unacceptable wear on the Anson™ hammer union male end head, nut retainer segments, nut engagement shoulder and thread flank—all in one small tool.



Applications

- Check wear on male union head is within acceptable limits
- Check male end nut retainer segments for wear and deformation
- Check for flank wear on the union thread
- Check wear of union nut load shoulder

Available for the following sizes:

Size and Fig. Number	Part Number	
	Non-segmented	Segmented
2" Fig 1502	89253	90711
3" Fig 1502	89254	90712
4" Fig 1502	29255	90713
2" Fig 602	90570	90714
3" Fig 602	89256	90715
4" Fig 602	89257	90716
2" Fig 200/206	89258	N/A
3" Fig 200/206	89259	N/A
4" Fig 200/206	89260	N/A
5" Fig 200/206	89261	N/A
6" Fig 200/206	89262	N/A

Refer to NOV PPS User Manual M141 for further information