

Rotational Safety Joint

The NOV Rotational Safety Joint is designed to allow positive release of the tubing. The safety joint is used between packers in single, dual and multiple packer completions. It may also be used in conjunction with a shear release sub if desired.

Features

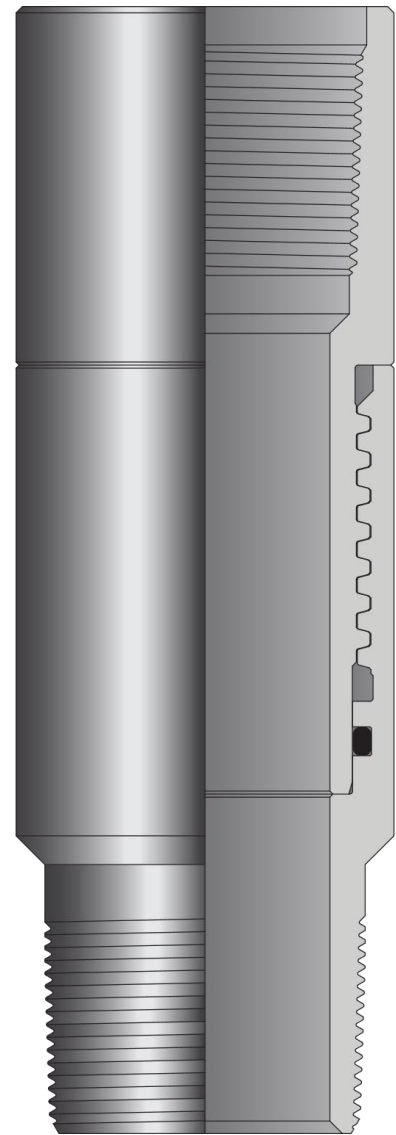
- Right-hand or left-hand release available.
- Standard EU 8 RD connections, premium connections available upon request.
- Standard tubing sizes available

Benefits

- Positive release of the tubing in the event a packer will not release.

Applications

- Single, dual and multiple packer completions.
- Fracturing, acidizing and remedial workover service.



Technical Data

Tubing Size in. (mm)	Max. O.D. In. (mm)	Min. I.D. In. (mm)	Standard Thread Connection Box X Pin	Left-Hand Release	Right-Hand Release
1.250 31,75	2.255 57,28	1.234 31,34	1.660" NU 10 RD	568-16L	568-16-R
2.375 60,33	3.078 78,18	1.984 50,39	2.375" EU 8 RD	568-23-L	568-23-R
2.875 73,03	3.703 94,06	2.484 63,09	2.875" EU 8 RD	568-27-L	568-27-R
3.500 88,90	4.516 114,71	2.984 75,79	3.500" EU 8 RD	568-35-L	568-35-R
4.500 114,30	6.140 155,96	3.740 95,00	4.500" EU 8 RD	568-45-L	568-45-R