

Pump Out Plug

The NOV Pump Out Plug is used as a temporary plug to facilitate setting of hydraulic packers or as a temporary plug when run below permanent and retrievable packers. The plug shoulders in the housing to hold pressure from below without applying pressure on the shear screws and unseats with pre-determined amount of tubing pressure.

The Pump Out Plug is available with Flat Bottom, Guide Nose, Wireline Entry Guide and In-Line versions. A Pump Out Ball Seat with wireline entry guide or In-Line Pump Out Ball Seat is available for applications where circulation is desired before setting a packer.

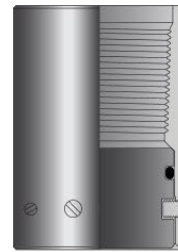
In applications using the In-line Pump Out Plug or the In-Line Pump Out Ball Seat, a perforated sub and bull plug is run below to catch the pump out plug or ball and ball seat. This eliminates any debris from dropping to the bottom of the wellbore.

Standard sizes include 2.375 in. EUE 8 RD, 2.875 in. EUE 8 RD and 3.500 in. EUE 8 RD.

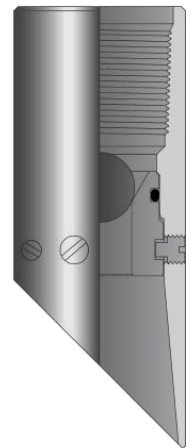
Additional sizes available on request.
Premium threads available on request.

Contact a NOV applications engineer for additional information.

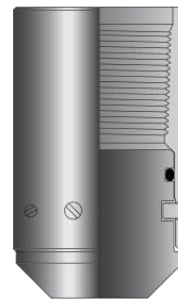
Flat bottom pump out plug



Pump out ball seat with wireline entry guide



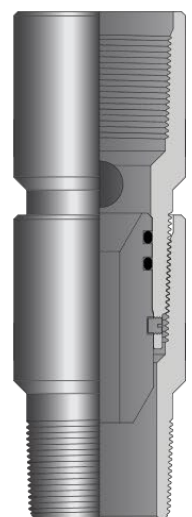
Pump out plug-guide nose



Pump out plug with wireline entry guide



In-line pump out ball seat



In-line pump out plug

