

Downhole Swivel

The NOV Downhole Swivel is designed for use in deviated well conditions when a tubing anchor or packer is installed. The swivel is normally installed between the anchor or packer and the tubing below allowing the tubing tail pipe to remain stationary and the tubing above to turn freely. This allows for ease in setting the anchor or packer.

The Downhole Swivel is also used in horizontal wells to allow installation of tailpipe in bend section of the wellbore. This application allows the tool and tubing to turn freely without drag caused by the tubing in the bend or horizontal section of the wellbore.

Features

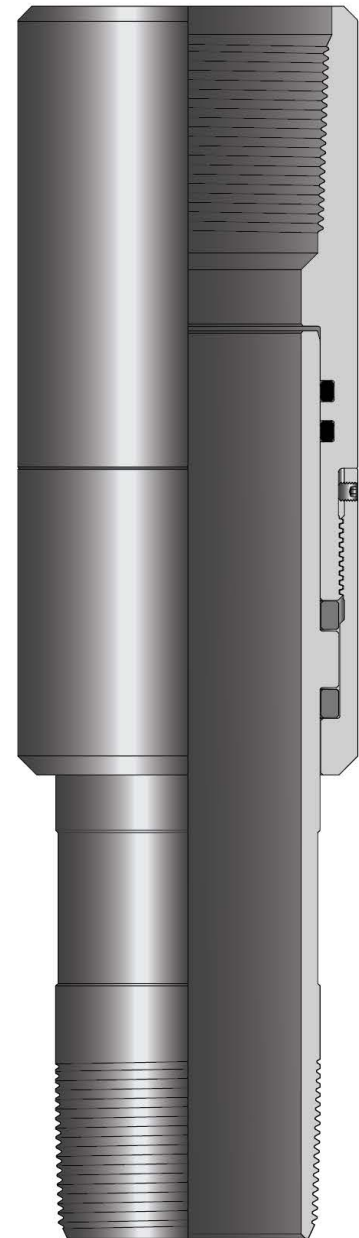
- Military grade bronze used as bearings
- Standard EU 8 RD connections, premium connections available upon request.
- Premium materials available upon request for hostile environments

Benefits

- Heavy duty PolyPak used to maintain sealing integrity
- Eliminates tailpipe torque in deviated or horizontal wells when setting packer or tubing anchor in vertical section

Applications

- Retrievable-packer systems
- Tubing Anchor Catchers with tailpipe below



Technical Data

Tubing Size in. (mm)	Max. O.D. In. (mm)	Min. I.D. In. (mm)	Thread Connection	Product Number
2.375 60,33	3.068 77,93	1.985 50,42	2.375" EU 8 RD	20-027-0200
2.875 73,03	3.688 93,68	2.441 62,00	2.875" EU 8 RD	20-027-0250
3.500 88,90	4.500 114,30	2.992 76,00	3.500" EU 8 RD	20-027-0350