

Lay Down / Stand Up Vertical Pressure Tank

for bulk cement storage



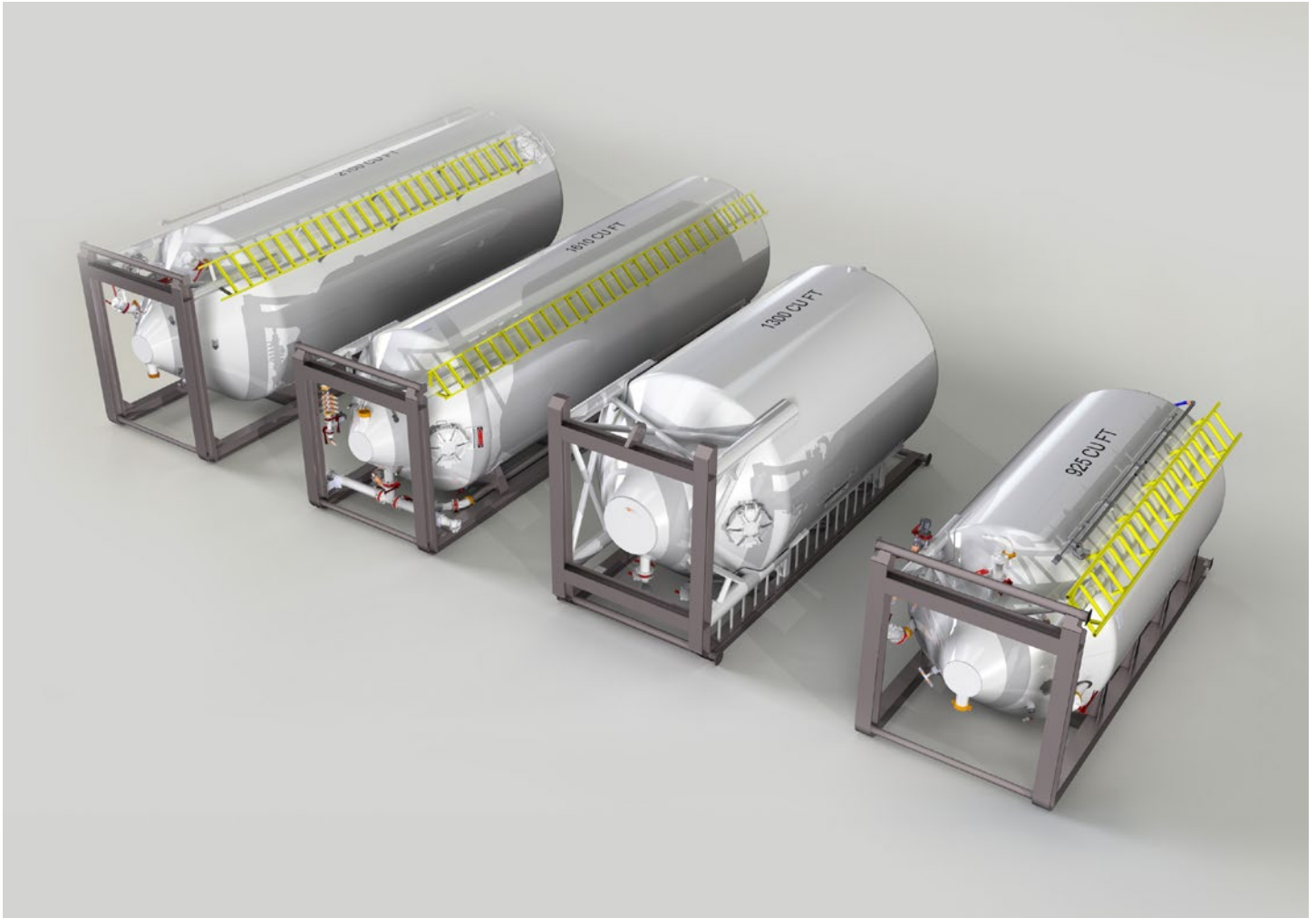
8ft – 10 ft diameter

Available volume sizes

970 cu.ft.	1610 cu.ft.
1000 cu.ft.	1710 cu.ft.
1175 cu.ft.	2100 cu.ft.
1200 cu.ft.	2400 cu. ft.
1350 cu.ft.	

Lay Down / Stand Up Vertical Pressure Tank

for bulk cement storage



Tanks are designed per ASME Section VIII, Division 1 Code for 40 psi internal pressure and -20° to 250° F. Complete with one 5-in Discharge manifold with Victaulic nipple with butterfly valve and union attached for inlet, one (1) 5-in Vent manifold with Victaulic nipple, butterfly valve and union, one (1) 5-in Fill manifold with Victaulic nipple, butterfly valve and union, one (1) 2-in 3000-lb coupling with pressure relief in the Vent manifold, one (1) 20-in hinged manway for internal access, one (1) 1.5-in 3000-lb coupling in top head with gauge line viewable from ground level, and a aeration system with inlet manifolding. The aeration system to include four aeration cartridges and four aeration jets in the cone. The aeration manifolding is 3-in pipe with 2-in inlet with union, butterfly valves for air control, check valves on aeration inlet to reduce cement dust back flow. A skid base with appropriate support saddles will be installed under the full length of the tank and support braces at the tank base. Including blast and application of industrial primer and epoxy coating.

Note: We offer the following coating options.

2 coat (prime and paint), 3 coat (zinc, prime and paint) 4 coats (zinc, prime, paint and clear coat)