

Pipe Handling Cranes

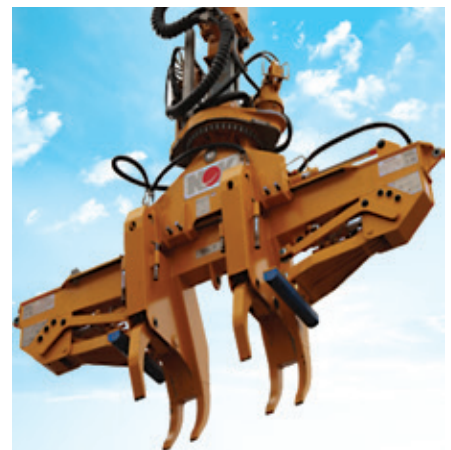


Your partner for a Lifetime of Lifting

Our pipe handling cranes with the gripper yoke enables an unmanned pipe deck to work by mechanizing the tubular transfer operations. It provides safe, precise, efficient handling and lifting sequences in which the load pendulum effect has been eliminated. The pipe handling cranes transport tubulars from the pipe deck to the Catwalk™ or Catwalk Machine™ and vice versa, by means of a gripper yoke.

The cranes can also be used for other lift operations (lifting/moving of miscellaneous parts, bulk equipment and containers, etc.) either by using slings from the pipe gripper yoke or by attaching the optional chain sling with hook to the boom tip.

Our pipe handling cranes meets all the latest drilling requirements and focus on safety, reliability, and productivity that go hand in hand.



Increase your stand building productivity together with full lifting flexibility for all-around deck handling

Key Features

Drill Pipe and Casing Handling

- Gripper yokes and magnet yokes are specialized to move a large number of pipes quickly and with precision.
- NOV provides customized yokes for all types of specialized pipes. This eliminates the need for sling arrangements, resulting in safer handling of tubulars.
- Handling capabilities from 2d" DP to 36" conductor pipes
- Horizontal handling for single, double, triple stands
- Options are available for chrome and screen pipes

Horizontal Riser Yokes

- Specialized yokes for lifting risers ranging from 50 ft to 90 ft
- All necessary options available for any type of end couplings and buoyancy sizes

Multipurpose Crane

For handling of riser joints and heavy tubulars, NOV has fitted the larger Knuckle Boom Cranes with pipe handling capabilities. Multipurpose cranes may be both offshore units, or Active Heave Compensation (AHC) cranes up to 400 tonnes and prepared for yoke handling.

Knuckle Boom Crane Upgrades

NOV offers upgrades for yoke handling on previously delivered Knuckle Boom Cranes. Please contact your nearest NOV sales office for further information.



Technical Specifications

Model	PC1610K	PC1891K (73 ft)	PC1891K (82 ft)	PC2201K	PC2401K
Weight	17.5 tonnes	24.5 tonnes	25.5 tonnes	33 tonnes	47 tonnes
Maximum Working Radius	18 m (59 ft)	22.3 m (73 ft)	25 m (82 ft)	29 m (95 ft)	32 m (105 ft)
Hook Load SWL	5.3 tonnes	9 tonnes	5.5 tonnes	6 tonnes	10 tonnes

Yoke Specifications*

Model	GRYO2001	GRYO3001	GRYO3605**	RIYO5001**	RIYO7501**	RIYO9001**	Slip Joint Beam**	SCYO0001
Weight	2,1 tonnes	2,3 tonnes	9 tonnes	12 tonnes	14,5 tonnes	17,4 tonnes	5,3 tonnes	4 tonnes
Riser/Pipe	2d"-20"	5½"-30"	20"-36"	50 ft	75 ft	90 ft	as required	3½"-13a"
SWL	3,5 tonnes	5 tonnes	25 tonnes	12,3 tonnes	30 tonnes	37 tonnes	50 tonnes	3 tonnes

* Additional information on other models is available on request.

** Available only for multipurpose crane.

Options

- XYZ Drive enables the operator to control the crane within a specific coordinate system. Position the crane and/or move it from point A to point B in a faster, safer, and more productive way.
- Utility Winch provides extended deck handling.
- Arctic Kit prepares the crane for extreme cold environments to -40°C (-40°F).
- Radio Remote Control (RRC) helps the operator achieve more accurate loading and unloading of payloads and helps to avoid blind spots.
- Additional features include CCTV, Aviation Light, Complete Pedestal Extension, Platform Skidding, Internal/External HPU, ABS+CDS, and DnV Drill.

