

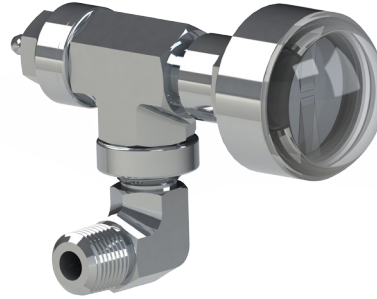
Blak-JAK™ Pressure Indicator™ Light

Knowing when washpipe packing will leak has always been a guessing game—until now. The new NOV Mission Blak-JAK Pressure Indicator* light ensures optimum life of washpipe packing, while at the same time providing a 12-36 hour warning before packing failure. The Blak-JAK Pressure Indicator light adds value through the following:

- Reduced risk exposure for rig floor personnel
- Compatibility to virtually all conventional topdrives
- Field proven reliability at pressures up to 7500 psi

Packing rings in the lower rotating housing of a washpipe cartridge fail sequentially. Once the third packing ring begins to leak and the fourth packing ring energizes, the light will begin to strobe; this indicates that the washpipe packing needs to be replaced at the soonest opportunity. The early warning provided by the Blak-JAK Pressure Indicator light can consistently prevent mud leakage and unnecessary downtime. For more information contact your NOV Mission representative.

*Patent Pending



Blak-JAK Pressure Indicator Light



Blak-JAK Pressure Indicator Light Mounted on a Blak-JAK 7500 Washpipe Cartridge



Part Number	Description
80506400	Blak-JAK Pressure Indicator Light Assembly (includes light and battery)
80506401	Blak-JAK Replacement Light Bulb and Lens Assembly (includes battery)

FEATURES AND BENEFITS:

Added Value

- Optimized washpipe packing run times
- Reduced maintenance down time
- Reduced operational costs

Reliability

- 50 hour battery life after the Pressure Indicator light begins to strobe
- Field tested in real world drilling conditions
- Strobe is clearly visible in bright sunlight

Simple Compact Design

- At a weight of less than one pound it adds no significant weight to the cartridge
- Reverse compatibility to all rotary swivels and topdrives

www.nov.com/mission

mission@nov.com

11300 Windfern
Houston, Texas 77064
United States
Phone: 281 517 3100
Fax: 281 517 0340



© 2014 National Oilwell Varco, All rights reserved
D352004081-MKT-001 Rev. 01