

EZstrip™ TR Muncher™



With our Maintain-in-Place technology, the complete cutter stack can be inspected and replaced within two and a half hours.

To minimize the time and cost involved when maintaining a conventional grinder/macerator, the EZstrip can easily be maintained in place, without disconnecting or removing any pipework.

Currently, the removal of the cutting elements from a typical grinder/macerator requires removal from site and can take up to two days to complete.

With the EZstrip CT201 Muncher, the complete cutter stack can be inspected and replaced within two and a half hours.

Where It All Began

We first began manufacturing progressing cavity pumps in 1935, followed by the Muncher range of grinders in 1981, and have continued to engineer industry leading products for over 80 years.

The new EZstrip pump design was launched in 2009 offering a range of operation and maintenance benefits and has proved to be a great success amongst end users.

We incorporated the same maintenance benefits into our Muncher range of grinders offering an option for a complete EZstrip package.

Features & Benefits

The EZstrip TR Muncher is an extension to our Muncher range of grinders, offering a choice of cutter materials and thickness for effective and efficient grinding of solids.

- Full access port allowing ease of inspection (CT201).
- Maintain in place of the cutters and spacers (CT201).
- Easily removed cutter stack.
- No special tools required.
- Reduced maintenance downtime.
- Increased labour savings.
- No need to disconnect pipework.
- Service exchange option available

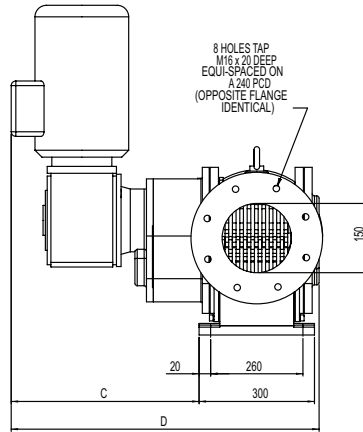
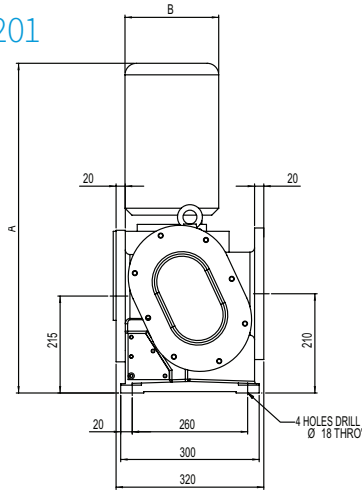


Technical Data

Performance Data

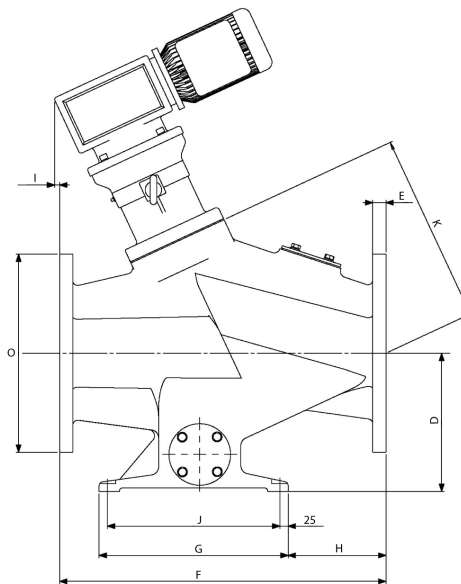
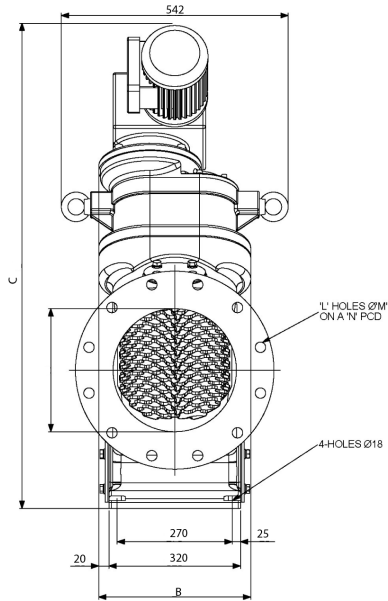
| Model | %D.S/M ³ /HR | | | | |
|-------|-------------------------|-----|-----|-----|-----|
| | 118 | 100 | 85 | 63 | 52 |
| CT201 | 118 | 100 | 85 | 63 | 52 |
| CT203 | 242 | 210 | 183 | 155 | 125 |
| CT205 | 440 | 388 | 330 | 276 | 225 |

CT201



| Model No. | kW | A | B | C | D | Wt. Kg |
|-----------|-----|-----|-----|-----|-----|--------|
| CT201D | 1.5 | 700 | 186 | 400 | 700 | 140 |
| CT201D | 2.2 | 715 | 203 | 430 | 730 | 175 |

CT203/205



| Model No. | kW | A | B | C | D | E | F | G | H | I | J | K | L | M | N | O | Wt. Kg |
|-----------|-----------|-----|-----|------|-----|----|-----|-----|-----|-----|-----|-----|----|----|-----|-----|--------|
| CT203C | 1.5 | 100 | 370 | 1020 | 205 | 24 | 489 | 410 | 124 | 140 | 360 | 363 | 8 | 18 | 180 | 220 | 290 |
| CT203D | | 150 | 370 | 1050 | 230 | 25 | 540 | 410 | 155 | 40 | 360 | 354 | 8 | 22 | 240 | 285 | 290 |
| CT203E | | 200 | 370 | 1050 | 256 | 29 | 591 | 410 | 205 | 16 | 360 | 341 | 12 | 22 | 295 | 343 | 290 |
| CT205F | | 250 | 370 | 1190 | 281 | 32 | 692 | 460 | 205 | 30 | 410 | 494 | 12 | 26 | 355 | 406 | 345 |
| CT205G | | 300 | 370 | 1190 | 332 | 32 | 794 | 460 | 263 | -17 | 410 | 472 | 12 | 26 | 410 | 483 | 345 |
| CT203C | 2.2 - 4.0 | 100 | 395 | 1130 | 489 | 24 | 489 | 410 | 124 | 169 | 360 | 363 | 8 | 18 | 180 | 220 | 340 |
| CT203D | | 150 | 395 | 1170 | 540 | 25 | 540 | 410 | 155 | 97 | 360 | 354 | 8 | 22 | 240 | 285 | 340 |
| CT203E | | 200 | 395 | 1170 | 591 | 29 | 591 | 410 | 205 | 72 | 360 | 341 | 12 | 22 | 295 | 343 | 340 |
| CT205F | | 250 | 395 | 1310 | 692 | 32 | 692 | 460 | 205 | 87 | 410 | 494 | 12 | 26 | 355 | 406 | 390 |
| CT205G | | 300 | 395 | 1310 | 794 | 32 | 794 | 460 | 263 | 40 | 410 | 472 | 12 | 26 | 410 | 483 | 390 |

All dimensions in mm's, unless otherwise stated and for guidance only.

For full certified drawings or assistance, please contact us.



10353 Richmond Ave., 11th floor
Houston TX 77042

industrial@nov.com

nov.com/industrial