

EZstrip™ TR Muncher™



EZstrip™ TR Muncher™

The EZstrip series of grinders offers a competitive solution to solids grinding and sludge conditioning. With the ability to maintain your grinder in place, maintenance is reduced by more than 70% for significant cost savings.

Features & Benefits

Equal Thrust Offset (ETOS) Cutters

Capture and reduce large solids and the effective maceration of wet wipes and other fibrous materials.

Maintain-in-Place

Eases removal of rotating parts without disconnecting the electrical connection to the unit and the housing from the pipework. This reduces maintenance time from days to a few hours.

Cantilever Design

Eliminates the need for lower mechanical seals or bearings reducing breakdowns and repair costs.

Angled Cutter Stack

“Upflow” design rejects hard materials reducing the risk of damage to the cutter teeth.

Cartridge Assembly

Short lead times for cutter stack cartridge replacement units.

Low running speeds

Reduced wear for a longer working life which extends the periods between routine maintenance. Think of the savings that could be realized on abrasive applications.

Built-In Trash Trap

Situated below and away from the cutter stack to catch any rejected materials. Rejected items can be removed or flushed out through the clean out port.

Energy Efficient Motors

Efficient motors along with low installation power to further reduce operating costs.

Service Exchange

Pre-assembled cartridge is available with a 2-year warranty to allow faster reassembly time.

Applications

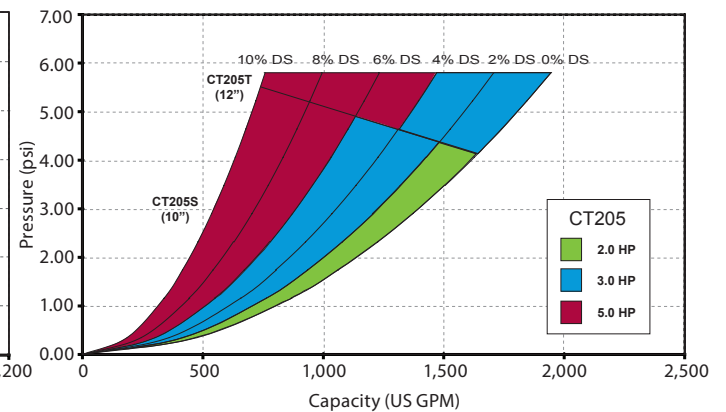
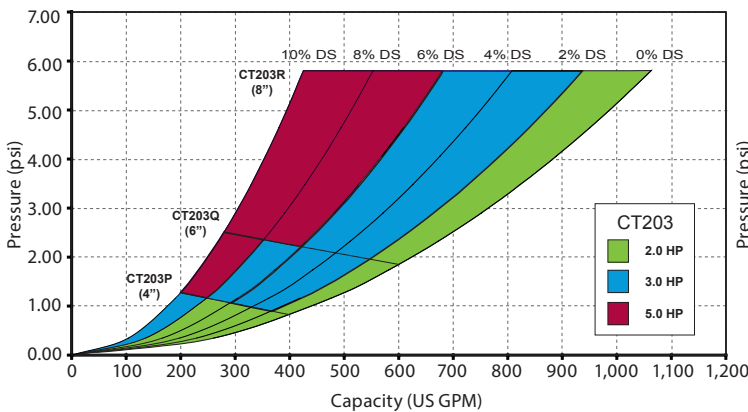
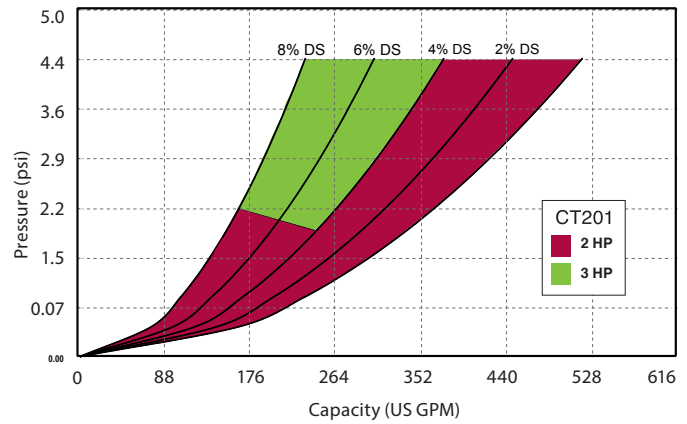
- Tanker reception
- Pump protection
- Fat/sludge conditioning
- Abrasive sludge maceration
- Screenings in waste water
- Organic waste maceration

Capacity

- Up to 2,000 gal/min

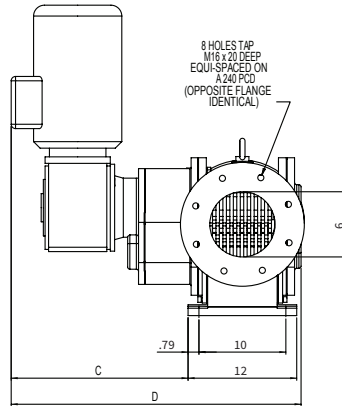
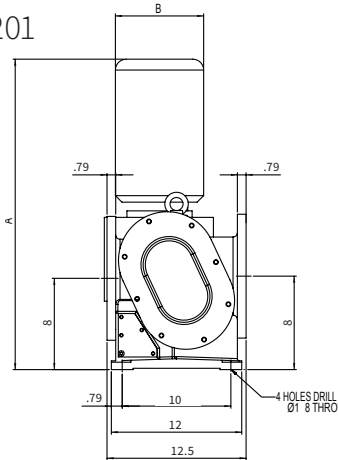
Pressure

- up to 5 psi



EZstrip™ TR Muncher™

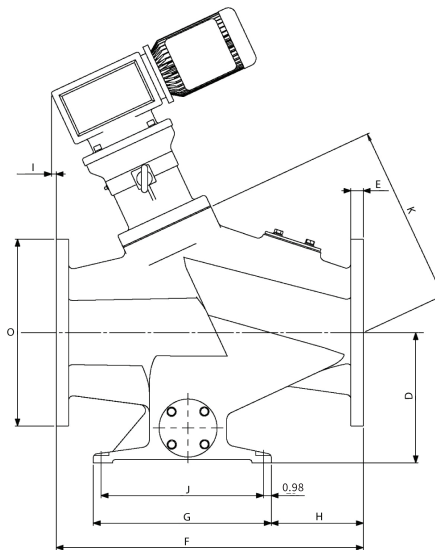
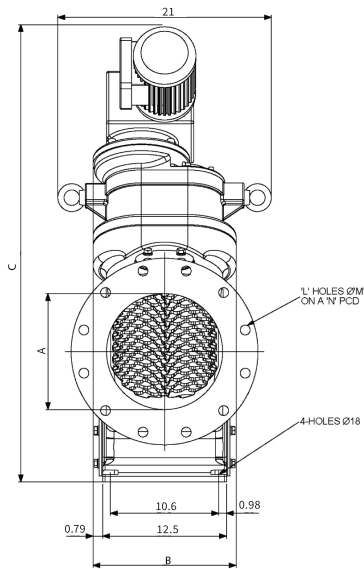
CT201



Model	HP	A	B	C	D	Wt. Lbs
CT201D	2.0	27.5	7	16	27.5	309
CT201D	3.0	28	8	17	29	386

Model	%D.S/ US GPM				
	0	2	4	6	8
CT201	519.2	440	374	277.2	228.8
CT203	1064.8	924	805.2	682	550
CT205	1936	1267.2	1452	1214.4	990

CT203/205



Model	HP	A	B	C	D	E	F	G	H	I	J	K	L	M	N	O	Lbs.
CT203P	2.0	3.94	14.57	40.15	8.07	0.94	19.25	16.14	4.88	5.51	14.17	14.29	0.31	0.71	7.09	8.66	639
CT203Q		5.90	14.57	40.15	9.06	0.98	21.26	16.14	6.10	1.57	14.17	13.94	0.31	0.87	9.45	11.22	639
CT203R		7.87	14.57	40.15	10.08	1.14	23.27	16.14	8.07	0.63	14.17	13.82	0.47	0.87	11.61	13.50	639
CT205S		9.84	14.57	46.85	11.06	1.26	27.24	18.11	8.07	1.18	16.14	19.45	0.47	1.02	13.98	15.98	760
CT205T		11.81	14.57	46.85	13.07	1.26	31.26	18.11	10.35	-0.67	16.14	18.58	0.47	1.02	16.14	19.01	760
CT203P	3.0 - 5.0	3.94	15.55	44.49	8.07	0.94	19.25	16.14	4.88	6.65	14.75	14.29	0.31	0.71	7.09	8.66	749
CT203Q		5.90	15.55	46.06	9.06	0.98	21.26	16.14	6.10	3.82	14.17	13.94	0.31	0.87	9.45	11.22	749
CT203R		7.87	15.55	46.06	10.08	1.14	23.27	16.14	8.07	2.83	14.17	13.82	0.47	0.87	11.61	13.50	749
CT205S		9.84	15.55	51.57	11.06	1.26	27.24	18.11	8.07	3.43	16.14	19.45	0.47	1.02	13.98	15.98	860
CT205T		11.81	15.55	51.57	13.07	1.26	31.26	18.11	10.35	1.57	16.14	18.58	0.47	1.02	16.14	19.01	860

All dimensions are in inches and for guidance only.

National Oilwell Varco has produced this brochure for general information only, and it is not intended for design purposes. Although every effort has been made to maintain the accuracy and reliability of its contents, National Oilwell Varco in no way assumes responsibility for liability for any loss, damage or injury resulting from the use of information and data herein. All applications for the material described are at the user's risk and are the user's responsibility.

Corporate Headquarters
7909 Parkwood Circle Drive
Houston, Texas 77036
USA

Process and Flow Technologies
10353 Richmond Avenue
Houston, TX 77042
USA

© 2017 National Oilwell Varco - All rights reserved
CMKT-891_ENG_v01



industrial@nov.com

nov.com/industrial