

Cerberus v14.5 Release Summary

March 2022



CTES™ Cerberus™ v14.5 is now available. Customers with current software maintenance contracts will have access to this new version of Cerberus.

New Features

- Broomstick models in Orpheus™– Added multiple predefined CoF plots for RIH and POOH
- Orpheus project defaults including saved Agitator ratios
- Live fatigue displayed from ReelTrak™ to CTES Live™



Enhanced Functionalities

String Inventory View:

- Dynamic view updating automatically
- Launch String Editor directly from String Inventory
- Print the string directly from String Inventory
- Last action displayed including services
- New service enhancement (from String Editor)
- CTES Live status
- ReelTrak status

Well ID	Status	Location	Technical Specifications
01-01-01	Open	Area 1	1000' 1000' 1000'
01-01-02	Open	Area 2	1000' 1000' 1000'
01-01-03	Open	Area 3	1000' 1000' 1000'
01-01-04	Open	Area 4	1000' 1000' 1000'
01-01-05	Open	Area 5	1000' 1000' 1000'
01-01-06	Open	Area 6	1000' 1000' 1000'
01-01-07	Open	Area 7	1000' 1000' 1000'
01-01-08	Open	Area 8	1000' 1000' 1000'
01-01-09	Open	Area 9	1000' 1000' 1000'
01-01-10	Open	Area 10	1000' 1000' 1000'

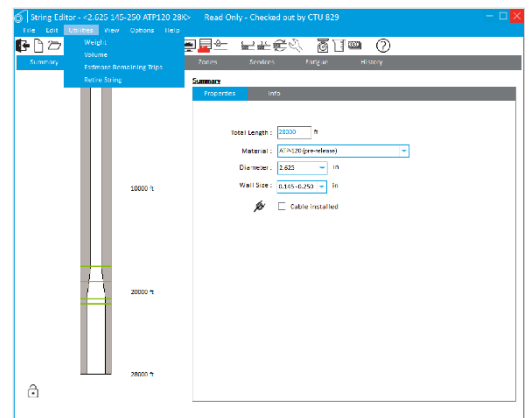
District Administration:

- Added *My Local PC* as a district to enable administrators to check out as well as push components to unit computers
- Search filtering on all cloud menus to help users quickly find cloud items
- Simplified workflow to checkout priority components i.e., direct checkout of wells from Orpheus

Component Name	Type	Location	Status
Subsidence Job (Steel Deck)	Fatigue	01-10-0038 6 37 05 AM	District Admin - AMERPT
Subsidence Job (Steel Deck)	Fatigue	01-10-0039 1 51 57 PM	District Admin - AMERPT
Subsidence Job (Steel Deck)	Fatigue	01-10-0039 1 51 58 AM	District Admin - A
JPLN Cook C	Fatigue	02-20-0022 1 54 24 PM	District Admin - A
JPLN Cook B	Fatigue	02-20-0021 1 54 24 PM	District Admin - A
Wellbore Campaign A 023	Fatigue	02-20-0021 1 54 24 PM	CTES Admin - Edge
Wellbore Campaign A 024	Fatigue	02-20-0021 1 54 24 PM	CTES Admin - Edge
Wellbore Campaign A 025	Fatigue	02-20-0021 1 54 24 PM	CTES Admin - Edge
Wellbore Campaign A 026	Fatigue	02-20-0021 1 54 24 PM	CTES Admin - Edge
Wellbore Campaign A 027	Fatigue	02-20-0021 1 54 24 PM	CTES Admin - Edge
Wellbore Campaign A 028	Fatigue	02-20-0021 1 54 24 PM	CTES Admin - Edge
Wellbore Campaign A 029	Fatigue	02-20-0021 1 54 24 PM	CTES Admin - Edge
Wellbore Campaign A 030	Fatigue	02-20-0021 1 54 24 PM	CTES Admin - Edge
Wellbore Campaign A 031	Fatigue	02-20-0021 1 54 24 PM	CTES Admin - Edge
Wellbore Campaign A 032	Fatigue	02-20-0021 1 54 24 PM	CTES Admin - Edge
Wellbore Campaign A 033	Fatigue	02-20-0021 1 54 24 PM	CTES Admin - Edge
Wellbore Campaign A 034	Fatigue	02-20-0021 1 54 24 PM	CTES Admin - Edge
Wellbore Campaign A 035	Fatigue	02-20-0021 1 54 24 PM	CTES Admin - Edge
Wellbore Campaign A 036	Fatigue	02-20-0021 1 54 24 PM	CTES Admin - Edge
Wellbore Campaign A 037	Fatigue	02-20-0021 1 54 24 PM	CTES Admin - Edge
Wellbore Campaign A 038	Fatigue	02-20-0021 1 54 24 PM	CTES Admin - Edge
Wellbore Campaign A 039	Fatigue	02-20-0021 1 54 24 PM	CTES Admin - Edge
Wellbore Campaign A 040	Fatigue	02-20-0021 1 54 24 PM	CTES Admin - Edge

String Editor:

- History log enables direct editing of service event date/time and recalculating fatigue
- New service types include brush, flush, N2 blanket, etc. plus the ability to add new types
- Simplified string and job retiring workflow



Cerberus—Local to Cloud Transition

Cerberus users with a valid software maintenance contract may download the current version of the Cerberus software from www.nov.com/ctes.

Prior to downloading Cerberus v14.5

1. Back up all Cerberus data.
 - a. Select Utilities > Backup & Restore > Backup Data Directory

Downloading Cerberus v14.5

1. Navigate to the CTES software download center: <https://ctes.nov.com/CustomerPortal/ProductDownloads>
 - a. Input your Username and Password to access the appropriate file.
 - b. To obtain password information or to renew a software license, contact CTES for assistance: +1.936.777.6200 or CTESkeys@nov.com.
2. Run the Cerberus .exe file to install the software.

Activating Cerberus v14.5

License Cerberus Software on Your Computer

1. Click the Cerberus icon on your desktop OR find the Cerberus app in your Start menu
2. If this is the first time Cerberus is run, the user must obtain authorization for this copy of Cerberus. You will be provided instructions for gaining authorization via the software start screen.

Obtaining MyNOV credentials to connect to Cerberus Cloud

1. Your company administrator will need to set up your access to your cloud account
2. Enter your MyNOV credentials.
 - a. If you haven't already created a MyNOV account, create one at <https://portal.mynov.com/accountregistration.aspx>
3. Once logged in, you will not be prompted to log in again on the same computer unless you sign out.

Recommended Computer Specifications for Cerberus	
Software Operation System	Windows 10
Processor	8th Gen i5 or better
RAM	8 GB / 16 GB with OrionNET
Available Storage	10 GB
Display Resolution	1440 x 900
HMI	Keyboard & Mouse or Touch Screen
.NET Framework	4.5