

# Pipex Manhole Internal Hatch Boxes

Fiber Glass Systems

NOV Completion & Production Solutions

pipexltd.com

FGS Pipex Manhole Hatch Boxes for installation into traditional built manholes for the safe transfer and inspection of foul, surface water and chemical trade effluent.

We can manufacture in a range of thermoplastic materials to suit the application in either Homopolymer Polypropylene PP-H, PE100, C-PVC and PVDF.

Branch inlets can be configured to suit any combination of drain sizes with adaptors to connect to cast iron, clay systems and other plastic drainage systems.

Bolted inspection covers plates with gasket seals and stainless steel encapsulated fixings provide a water and air tight seal.

## Typical application areas:

- Below ground drainage
- Trade effluent waste
- Chemical
- Pharmaceutical
- Food and drink processing

## Key Advantages:

- Bolted water and gas tight
- Heavy wall pipe for buried pipe systems
- Smooth internal bores no internal beads avoid build up of fats, oils and grease
- Swept drainage fittings for directional drainage flows
- Branches can be adapted to suit cast iron, clay or plastic drainage systems
- Can be pressure jetting to WRc standards

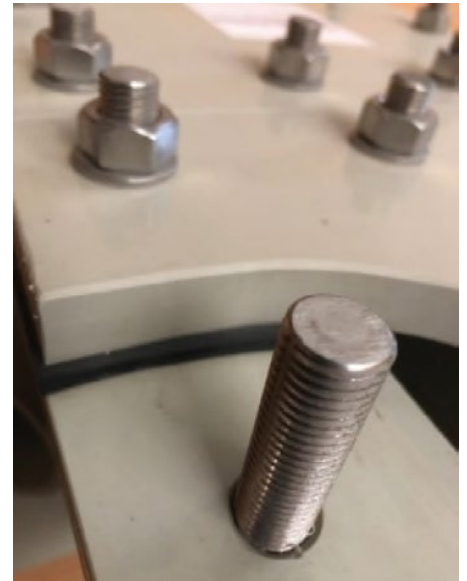
## Manhole Bolted Hatch Box – Below Ground Drainage System



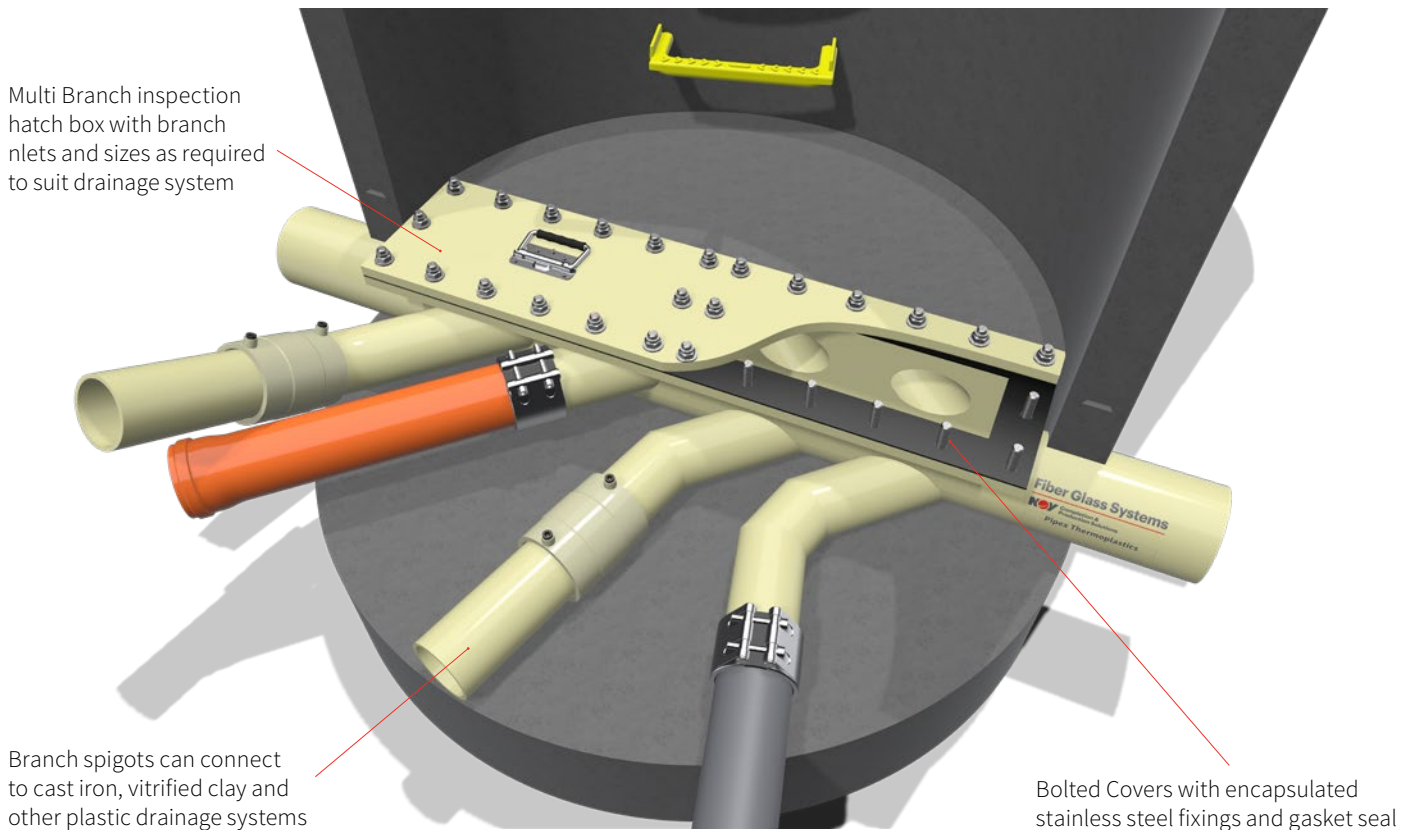
Smooth bore internal branch inlets



Bolted cover plates



Bolted Covers with encapsulated stainless steel fixings and gasket seal



Manhole Bolted Hatch Box Dimensions.  
Larger sizes up to 1000 dia available upon request