

Pipex Flow Control Chambers

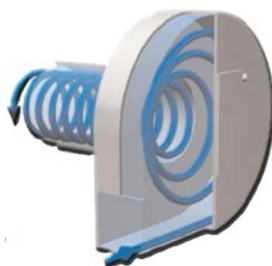
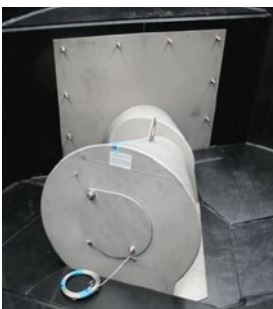
Flow Control Chambers incorporating vortex or other flow control devices factory fitted to suit the specific flow rate required. This packaged Flow Control Chamber product range offers a unique combination of a packaged solution incorporating specific benching within the chamber to suit the flow control device.. Our Flow Control Chambers are an alternative to heavy precast concrete chambers. Our Flow Control chambers are factory tested for watertightness prior to delivery.

The design is simple, consisting of an intake, a volute and an outlet. Flow is directed tangentially into the volute to form a vortex.

High peripheral velocities induce an air filled core with resulting back pressure that reduces discharge.

Typical applications areas:

- General civil foul and surface water manholes
- High water table sites
- Poor ground condition sites
- Contaminated and brownfield sites
- Remote or restricted access sites
- Complex drainage designs
- SUDS schemes
- Fast-track construction
- Transportation



Hydrobrake Chambers

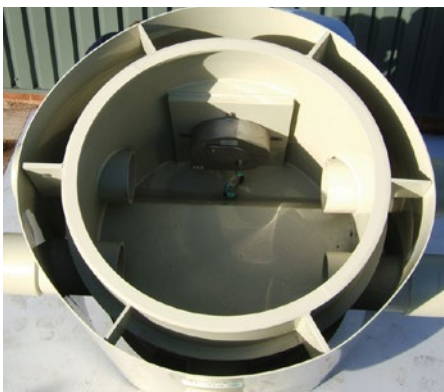
Key advantages:

- Flow Control Chambers are manufactured from advanced thermoplastics
- Thermoplastic materials are corrosion resistant, versatile and robust
- Head/discharge curves available for each model and size of Hydrobrake Flow Control
- Low electrical and thermal conductivity properties
- Guaranteed fluid and gas tight dependant on client specifications
- Manufactured to suit clients exact specifications
- Head wall and benching pre-fabricated to suit specified Hydrobrake Flow control
- Delivered to site in prefabricated units minimising installation schedules
- Low maintenance reducing overall lifetime cost
- Cost effective alternative to traditional methods thermoplastic materials
- Optional HDPE or timber shuttering available to accept insitu poured concrete surround
- Cable connections will be configured to suit the project design drawings



Multiple Cable duct entries

Hydrobrake chamber for the M25, London.



Highest performing passive flow control



Full access for rodding and jetting



Self activating and self cleansing flow control system